

Алматы (7273)495-231
Ангарск (3955)60-70-56
Архангельск (8182)63-90-72
Астрахань (8512)99-46-04
Барнаул (3852)73-04-60
Белгород (4722)40-23-64
Благовещенск (4162)22-76-07
Брянск (4832)59-03-52
Владивосток (423)249-28-31
Владикавказ (8672)28-90-48
Владимир (4922)49-43-18
Волгоград (844)278-03-48
Вологда (8172)26-41-59
Воронеж (473)204-51-73
Екатеринбург (343)384-55-89

Иваново (4932)77-34-06
Ижевск (3412)26-03-58
Иркутск (395)279-98-46
Казань (843)206-01-48
Калининград (4012)72-03-81
Калуга (4842)92-23-67
Кемерово (3842)65-04-62
Киров (8332)68-02-04
Коломна (4966)23-41-49
Кострома (4942)77-07-48
Краснодар (861)203-40-90
Красноярск (391)204-63-61
Курск (4712)77-13-04
Курган (3522)50-90-47
Липецк (4742)52-20-81

Магнитогорск (3519)55-03-13
Москва (495)268-04-70
Мурманск (8152)59-64-93
Набережные Челны (8552)20-53-41
Нижний Новгород (831)429-08-12
Новокузнецк (3843)20-46-81
Ноябрьск (3496)41-32-12
Новосибирск (383)227-86-73
Омск (3812)21-46-40
Орел (4862)44-53-42
Оренбург (3532)37-68-04
Пенза (8412)22-31-16
Петрозаводск (8142)55-98-37
Псков (8112)59-10-37

Пермь (342)205-81-47
Ростов-на-Дону (863)308-18-15
Рязань (4912)46-61-64
Самара (846)206-03-16
Саранск (8342)22-96-24
Санкт-Петербург (812)309-46-40
Саратов (845)249-38-78
Севастополь (8692)22-31-93
Симферополь (3652)67-13-56
Смоленск (4812)29-41-54
Сочи (862)225-72-31
Ставрополь (8652)20-65-13
Сургут (3462)77-98-35
Сыктывкар (8212)25-95-17
Тамбов (4752)50-40-97

Тверь (4822)63-31-35
Тольятти (8482)63-91-07
Томск (3822)98-41-53
Тула (4872)33-79-87
Тюмень (3452)66-21-18
Ульяновск (8422)24-23-59
Улан-Удэ (3012)59-97-51
Уфа (347)229-48-12
Хабаровск (4212)92-98-04
Чебоксары (8352)28-53-07
Челябинск (351)202-03-61
Череповец (8202)49-02-64
Чита (3022)38-34-83
Якутск (4112)23-90-97
Ярославль (4852)69-52-93

Россия +7(495)268-04-70

Казахстан +7(7172)727-132

Киргизия +996(312)96-26-47

www.jsr.nt-rt.ru | jou@nt-rt.ru

Технические характеристики на камеры стабильности КОМПАНИИ JSR



Temperature Range
+0 °C ~ 70 °C



Humidity Range
30 % ~ 85 % RH



Constant Temperature
Controller



Touch Screen
5.6" Color TFT Display
120 Patterns 1200 Segments



RS-232C or 485 Serial Interface
Multi-Drop up to 31 Instruments



Temp. & Humidity
Trend Data Recording



Drug Stability Test Chamber

JSDS-Series Temperature and Humidity Drug Stability Chamber designed for Drug Stability Test for pharmaceutical industry meets the requirement of ICH Guideline Q1A (Stability Test)



Specifications

Heating	Forced Air Convection
Cooling	CFC Free Air Cooled Compressor
Humidifier	Water Boiling Humidifier
Temp. Range	+ 10°C ~ 70°C

Accuracy	± 0.3°C at 20.0°C, 60% RH
Uniformity	± 1.0°C at 20.0°C, 60% RH
Temp. Sensor	Class A Pt-100 Ω Sensor
Humidity Range	30 ~ 85% RH
Accuracy	± 3.0 % RH at 20.0°C, 60% RH
Uniformity	± 6.0 % RH at 20.0°C, 60% RH
Humidity Sensor	Electronic Sensor
Illumination	Fluorescent lamp on/off for observation
Basic Controller	<p>JSC-4CP Programmable Controller</p> <p>Programmable PID Control</p> <p>11 Segment 999 Cycle Repeat</p>
Optional Controller 1	<p>JSC-2500 TFT-LCD Touch Screen (Art no. OEC-006)</p> <p>5.7" 640 x 480 pixel TFT-LCD Color Touch Screen</p> <p>64 MB Internal Memory for program and data storage</p> <p>External SD Memory Card</p> <p>120 Patterns 1,200 Segments, 999 hour 59 min 59 sec.</p> <p>9 Zone PID Group</p> <p>Displays real time trend graph monitoring</p> <p>Displays recorded trend graph monitoring</p> <p>Easy-to-use Graphic User Interface</p> <p>Uploading and downloading data, pattern, parameter setting with PC</p> <p>Control and Data Monitoring PC Software</p> <p>RS-232C or RS-485 Multi-Drop Communication</p>
Optional Controller 2	<p>JSC-950 TFT-LCD Touch Screen (Art no. OEC-007)</p> <p>5.6" 640 x 480 pixel TFT-LCD Color Touch Screen</p> <p>64 MB Internal Memory for program and data storage</p> <p>120 Patterns 1,200 Segments, 999 hour 59 min 59 sec.</p> <p>9 Zone PID Group</p> <p>Uploading and downloading data, pattern, parameter setting with PC</p> <p>Control and Data Monitoring PC Software</p> <p>RS-232C or RS-485 Multi-Drop Communication</p>
Safety	Over-Temperature Cut-Off
	Over Current Cut-Off
	Low Water Level Cut-Off
Material	Body : Epoxy Powder Coated Steel
	Chamber : Stainless Steel 304
	Double Layer Vacuum Glass Observation Window
	Including PVC Coated Wire Shelf

Electric	220±10% VAC 50/60Hz 1-Phase
Plug Config.	30 AMP or 50AMP

Models

Art No.		JSDS-300C	JSDS-420C	JSDS-960C
Chamber Volume (Capacity)		300 L	432 L	964 L
Dimensions	Inner	500 x 500 x 1200	600 x 600 x 1200	1200 x 600 x 1200
W x D x H mm	Outer	690 x 835 x 1985	790 x 935 x 1985	1390 x 935 x 1985
Temperature	Range	+10°C ~ 70°C w/o Humidification		
	Accuracy	± 0.3°C at 20.0°C, 60% RH		
	Uniformity	± 1.0°C at 20.0°C, 60% RH		
Humidity	Range	30 ~ 85% RH		
	Accuracy	± 3.0 % RH at 20.0°C 60% RH		
	Uniformity	± 6.0 % RH at 20.0°C 60% RH		
Illumination	Type	Fluorescent lamp on/off for observation		
	Lamp	3 x 36W FPL	3 x 36W FPL	4 x 36W FPL
Controller		Programmable PID Control 11 segments 999 cycle repeatable		
Sensors	Temp	Class A Pt-100 Ω Sensor		
	Humidity	Electronic Humidity Sensor		
Number of shelves/Max.		3 / 35	3 / 35	6 / 35
Heater Capacity		3.1 kW	3.5 kW	6.0 kW
Refrigeration System		CFC-Free Air Cooled Hermetically Sealed Compressor		
Electric Requirement		220VAC 50/60Hz 1P		
Power Rating		19 Amp	21 Amp	34 Amp
Power Plug		30 AMP	30 AMP	50 AMP

Features

Basic Controller JSC-4CP Programmable Controller



High precision Digital PID Microprocessor controls temperature, humidity and lighting in one integrated unit with easy to use 4-line back-light LCD display interface

Constant temperature, humidity and lighting operation with automatic OFF timer

Programmable operation capability of various climatic conditions up to 11 Segments 999 cycles or unlimited repeating operation of temperature, humidity and lighting with time duration

Calibration and auto-tuning function

Class A Pt-100 Ω temperature sensor

Precision electronic humidity sensor

Automatic defrost cycle

JSC-950 Optional Controller

JSC-2500 Optional Controller



5.6" TFT-LCD
 640x480 Touch Screen
 64MB internal memory for trend data and parameters storage



5.7" TFT-LCD
 640x480 Touch Screen
 64MB internal memory for trend data and parameters storage

External SD Card
memory for easy data
transfer



Programming

120 Patterns
1200 Segments
up to 999hour 59min
59sec
9 zone PID group



Programming

120 Patterns
1200 Segments
up to 999hour 59min
59sec
9 zone PID group



Data Transfer

Upload and download
pattern, parameter,
data to PC
Data monitoring PC
software



Graphic Interface

Easy-to-use graphical
interface



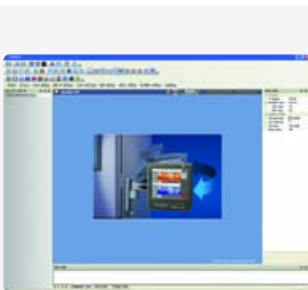
Pattern Editing

Saved patterns can be
recalled as graphical
interface
Easy upload and
download parameters
and patterns



Monitoring

Realtime trend graph
Recorded trend graph
Record data into
internal memory or SD
card



PC Software

Control and
monitoring
RS-232C or RS-485
Multi-Drop
communication
interface



Pattern Editing

Saved patterns can be
recalled as graphical
interface
Easy upload and
download parameters
and patterns



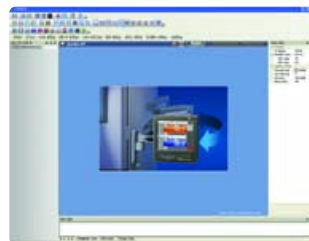
Data Transfer

Upload and download
pattern, parameter,
data to PC
Data monitoring PC
software



PC Pattern Editing

Saved patterns can be
recalled as graphical
interface
Easy upload and
download parameters
and patterns



PC Software

Control and
monitoring
RS-232C or RS-485
Multi-Drop
communication
interface

Construction

- Durable epoxy powder coated metallic casing
- Corrosion resistant Stainless Steel 304 chamber
- Durable Stainless Steel 304 Sheath Heater and Copper-Aluminum fin evaporator
- Removable and height adjustable shelf
- Built-in humidifier and automatic water supply
- Double layer vacuum tempered safety glass side wall on light bank
- Tempered Safety inner glass door

Performance

- Forced air circulation of controlled temperature and humidity to achieve excellent thermal uniformity
- Durable Stainless Steel 304 Sheath Heater and copper-aluminum finned evaporator
- Temperature control within $\pm 0.1^{\circ}\text{C}$ resolution
- Humidity control within $\pm 1.0\%$ RH resolution
- Separate heating and cooling compartment prevents contamination and maintenance free
- Cooling system with hermetically sealed compressor

Convenience

- Outer door with self adhesive magnetic packing
- Inner glass door with air tight gasket for easy observation of sample during experiment.
- Removable and height adjustable shelf by 25mm spacing
- Easy to access Light Bank System for convenient maintenance
- Corrosion resistant Stainless Steel 304 (ASTM 304) chamber
- Auto-defrost system, user settable interval and time
- Built-in casters for easy transport

Safety

DUAL OVER TEMP. CUT-OFF

- Digital system cut-off heater and AUDIO VISUAL ALARM in case $+2^{\circ}\text{C}$ above set temperature
- Analog system cut-off heater 10% above set temp.

MAX TEMP CUT-OFF heater and AUDIO VISUAL ALARM when $+1^{\circ}\text{C}$ above maximum limit OVER COOLING. CUT-OFF

- Digital system automatically cut-off compressor in case -3°C below set temperature

SENSOR DISCONNECTION ALARM
LOW WATER LEVEL ALARM AND CUT-OFF
HUMIDIFIER DRY-BURN PROTECTION
OVER CURRENT CUT-OFF : Electric Leakage Breaker

Ordering Information

Art No.	Descriptions	Elec. Req.	Capacity	Net Wt.	Ship Wt.
JSDS-300C	Drug Stability Chamber	220 VAC 50/60 Hz	300 L	185 kg	313 kg
JSDS-420C	Drug Stability Chamber	220 VAC 50/60 Hz	432 L	220 kg	368 kg
JSDS-960C	Drug Stability Chamber	220 VAC 50/60 Hz	964 L	380 kg	550 kg

Factory Built-in Options

Art No.	Descriptions
OEC-006	JSC-2500 Touch Screen Controller
OER-007	JSC-950 Touch Screen Controller
OER-010	6-Channel Chart Recorder

Art No.	PVC Coated Wire Shelf
PHS-C05	for JSDS-300C W470 x D480 mm
PHS-C13	for JSDS-420C W570 x D580 mm
PHS-C15	for JSDS-960C W570 x D545 mm

Алматы (7273)495-231
Ангарск (3955)60-70-56
Архангельск (8182)63-90-72
Астрахань (8512)99-46-04
Барнаул (3852)73-04-60
Белгород (4722)40-23-64
Благовещенск (4162)22-76-07
Брянск (4832)59-03-52
Владивосток (423)249-28-31
Владикавказ (8672)28-90-48
Владимир (4922)49-43-18
Волгоград (844)278-03-48
Вологда (8172)26-41-59
Воронеж (473)204-51-73
Екатеринбург (343)384-55-89

Иваново (4932)77-34-06
Ижевск (3412)26-03-58
Иркутск (395)279-98-46
Казань (843)206-01-48
Калининград (4012)72-03-81
Калуга (4842)92-23-67
Кемерово (3842)65-04-62
Киров (8332)68-02-04
Коломна (4966)23-41-49
Кострома (4942)77-07-48
Краснодар (861)203-40-90
Красноярск (391)204-63-61
Курск (4712)77-13-04
Курган (3522)50-90-47
Липецк (4742)52-20-81

Магнитогорск (3519)55-03-13
Москва (495)268-04-70
Мурманск (8152)59-64-93
Набережные Челны (8552)20-53-41
Нижний Новгород (831)429-08-12
Новокузнецк (3843)20-46-81
Ноябрьск (3496)41-32-12
Новосибирск (383)227-86-73
Омск (3812)21-46-40
Орел (4862)44-53-42
Оренбург (3532)37-68-04
Пенза (8412)22-31-16
Петрозаводск (8142)55-98-37
Псков (8112)59-10-37

Пермь (342)205-81-47
Ростов-на-Дону (863)308-18-15
Рязань (4912)46-61-64
Самара (846)206-03-16
Саранск (8342)22-96-24
Санкт-Петербург (812)309-46-40
Саратов (845)249-38-78
Севастополь (8692)22-31-93
Симферополь (3652)67-13-56
Смоленск (4812)29-41-54
Сочи (862)225-72-31
Ставрополь (8652)20-65-13
Сургут (3462)77-98-35
Сыктывкар (8212)25-95-17
Тамбов (4752)50-40-97

Тверь (4822)63-31-35
Тольятти (8482)63-91-07
Томск (3822)98-41-53
Тула (4872)33-79-87
Тюмень (3452)66-21-18
Ульяновск (8422)24-23-59
Улан-Удэ (3012)59-97-51
Уфа (347)229-48-12
Хабаровск (4212)92-98-04
Чебоксары (8352)28-53-07
Челябинск (351)202-03-61
Череповец (8202)49-02-64
Чита (3022)38-34-83
Якутск (4112)23-90-97
Ярославль (4852)69-52-93

Россия +7(495)268-04-70

Казахстан +7(7172)727-132

Киргизия +996(312)96-26-47

www.jsr.nt-rt.ru | | jou@nt-rt.ru