

Алматы (7273)495-231
Ангарск (3955)60-70-56
Архангельск (8182)63-90-72
Астрахань (8512)99-46-04
Барнаул (3852)73-04-60
Белгород (4722)40-23-64
Благовещенск (4162)22-76-07
Брянск (4832)59-03-52
Владивосток (423)249-28-31
Владикавказ (8672)28-90-48
Владимир (4922)49-43-18
Волгоград (844)278-03-48
Вологда (8172)26-41-59
Воронеж (473)204-51-73
Екатеринбург (343)384-55-89

Иваново (4932)77-34-06
Ижевск (3412)26-03-58
Иркутск (395)279-98-46
Казань (843)206-01-48
Калининград (4012)72-03-81
Калуга (4842)92-23-67
Кемерово (3842)65-04-62
Киров (8332)68-02-04
Коломна (4966)23-41-49
Кострома (4942)77-07-48
Краснодар (861)203-40-90
Красноярск (391)204-63-61
Курск (4712)77-13-04
Курган (3522)50-90-47
Липецк (4742)52-20-81

Магнитогорск (3519)55-03-13
Москва (495)268-04-70
Мурманск (8152)59-64-93
Набережные Челны (8552)20-53-41
Нижний Новгород (831)429-08-12
Новокузнецк (3843)20-46-81
Ноябрьск (3496)41-32-12
Новосибирск (383)227-86-73
Омск (3812)21-46-40
Орел (4862)44-53-42
Оренбург (3532)37-68-04
Пенза (8412)22-31-16
Петрозаводск (8142)55-98-37
Псков (8112)59-10-37

Пермь (342)205-81-47
Ростов-на-Дону (863)308-18-15
Рязань (4912)46-61-64
Самара (846)206-03-16
Саранск (8342)22-96-24
Санкт-Петербург (812)309-46-40
Саратов (845)249-38-78
Севастополь (8692)22-31-93
Симферополь (3652)67-13-56
Смоленск (4812)29-41-54
Сочи (862)225-72-31
Ставрополь (8652)20-65-13
Сургут (3462)77-98-35
Сыктывкар (8212)25-95-17
Тамбов (4752)50-40-97

Тверь (4822)63-31-35
Тольятти (8482)63-91-07
Томск (3822)98-41-53
Тула (4872)33-79-87
Тюмень (3452)66-21-18
Ульяновск (8422)24-23-59
Улан-Удэ (3012)59-97-51
Уфа (347)229-48-12
Хабаровск (4212)92-98-04
Чебоксары (8352)28-53-07
Челябинск (351)202-03-61
Череповец (8202)49-02-64
Чита (3022)38-34-83
Якутск (4112)23-90-97
Ярославль (4852)69-52-93

Россия +7(495)268-04-70

Казахстан +7(7172)727-132

Киргизия +996(312)96-26-47

www.jsr.nt-rt.ru | jou@nt-rt.ru

Технические характеристики на встряхивающие инкубаторы JSSI, аксессуары КОМПАНИИ JSR



Flask Holder Platform
/w polycarbonate holder



Flask Holder Platform
/w stainless steel holder



Universal Spring Wire Rack



Test Tube Holder

Interchangeable
Shaking Platforms

Two Stack Shaking Incubator

JSSI-2CM Series Two Stack Shaking Incubator provides multiple shaking platforms in a temperature controlled chamber for big volume tissue culture applications.

Specifications

Heating	Forced Air Convection
Cooling	CFC Free air cooled hermetically sealed compressor
Temp. Range	+ 10°C ~ 70°C
Accuracy	± 0.5°C at 25.0°C (JSSI-2CM)
Uniformity	± 2.0°C at 25.0°C (JSSI-2CM)
Shaking Motion	Orbital or Reciprocal

Speed Range	20 ~ 350 rpm (orbital)
Control	Microprocessor Digital PID Control
	Auto STOP Timer
	Individual shaking control of each stack
Sensor	Class A Pt-100 Ω Sensor
Safety	Over-Temperature Cut-Off
	Over Current Cut-Off
Material	Body - Epoxy Powder Coated Steel
	Chamber – Stainless Steel 304
	Tempered Safety Glass Window
	Built-in Caster and height adjustable level feet for easy transport, balancing and anti-vibration
Electric	220 \pm 10% VAC 50/60Hz 1-Phase
Plug config.	CEE 7/7 Schuko or BS 1363

Models

Art No.	JSSI-2CM	JSSI-2CML
Chamber Volume	600 L	
No. of Shaking Platform	2 shaking platforms	
Dimensions	Inner	850 x 720 x 975
W x D x H mm	Outer	1510 x 910 x 1300
	Platform	W700 x D650 mm
Temperature Range	+ 10°C to 70°C	
Accuracy	\pm 0.5°C at 25°C (without light)	
Uniformity	\pm 2.0°C at 25°C (without light)	
Shaking	Motion	Orbital or Reciprocal
	Speed	20 ~ 350 rpm
	Stroke	20 mm
Illumination	none	4 x 36 Watt FPL
Photoperiodic Light Control	none	Option
Working Light	25 Watt Bulb	none
Heater Capacity	1.5 kW	
Refrigeration System	CFC-Free Air Cooled Compressor	
Power Rating	11.4 Amp	

Features

Construction



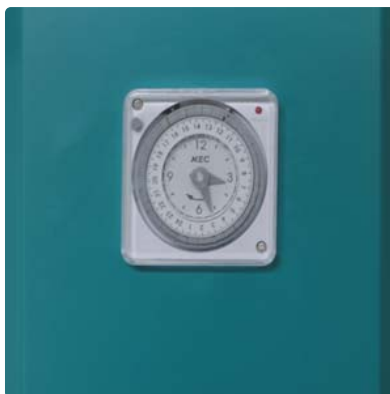
Chamber /w Flask Platform



Controller



Photoperiodic Control Timer



Caster with Level Foot



Controller

JSC-1D Digital PID Temperature Controller

±0.1 °C Digital PID Controller with LED Display

Automatic START/STOP timer

Adjustable timer scale 99min 59sec / 99hr 59min / 99day 23hr or continuous operation

Temperature calibration

Auto-tuning function

Class A Pt-100 Ω sensor

JSC-TACHO Digital Shaking Controller

Digital feedback RPM controller with automatic STOP timer, max. 99min 59sec / 99hr 59min / continuous

4 digit dual digital LED displays RPM and TIME

Inbuilt rpm calibration function

Adjustable smooth start and stop motion

Construction

Durable epoxy powder coated metallic casing

Corrosion resistant Stainless Steel 304 chamber

Durable Stainless Steel 304 Sheath Heater and Copper-Aluminum fin evaporator

Door with magnetic packing, double layer glass window

4 ea x caster and level foot for self balancing and anti-vibration

Performance

Two independently controlled shaking platform in a temperature controlled chamber enables large volume of culture under same condition for time saving and consistent production result.

Each shaking platform can be operated independently under different speed and time

Forced circulation for excellent thermal uniformity within $\pm 0.5^{\circ}\text{C}$

Separate heating and cooling compartment prevents contamination and maintenance free

Cooling system with hermetically sealed compressor

Durable shaking mechanism with powerful AC motor supports orbital or reciprocal shaking motion

Programmable Lighting System with 24 hour timer for photosynthetic culture

Convenience

Door with silicone packing and compression door lock Glass window on each platform, lighting in chamber for easy observation during cultivation

Door switch to cut-off shaking motion when put in and out sample

Auto-defrost system, user settable interval and time

Caster and height adjustable level feet for easy transport, balancing and anti-vibration

Various choice of shaking platforms

Safety

DUAL OVER TEMP. CUT-OFF

Digital system cut-off heater and AUDIO VISUAL ALARM in case $+2^{\circ}\text{C}$ above set temperature

Analog system cut-off heater 10% above set temp.

MAX TEMP CUT-OFF heater and AUDIO VISUAL ALARM when $+1^{\circ}\text{C}$ above maximum limit

OVER COOLING. CUT-OFF

Digital system automatically cut-off compressor in case -3°C below set temperature

SENSOR DISCONNECTION ALARM

Motor failure ALARM

Shaking motion automatically stops when door opened

OVER CURRENT CUT-OFF : Electric Leakage Breaker

Ordering Information

Art No.	Descriptions	Elec. Req.	Capacity	Net Wt.	Ship Wt.
JSSI-2CM	Multi-Stack Shaking Incubator 2 Shaking Platforms	220 VAC 50/60 Hz	600 L	200 kg	340 kg
JSSI-2CML	Multi-Stack Shaking Incubator 2 Shaking Platforms /w Illumination Control	220 VAC 50/60 Hz	600 L	210 kg	340 kg

(Shaking Incubator supplied without shaking platform and accessories)

Optional Accessories

Art No.	Descriptions
OHC-106	24 Hour Timer Photoperiodic Light Control

Art No.	Descriptions
PHF-P11	Adaptor Kit for Reciprocal Motion
PHF-U70	Universal Spring Rack W690 x D650 mm



Flask loading capacity (approx.)

100 ml 42 ea

250 ml 25 ea

500 ml 19 ea

1000 ml 15 ea

2000 ml 8 ea

PHF-P70	Universal Flask Holder Platform W700 x D650 mm
---------	--

supplied without flask holders



Flask loading capacity (approx)

50 ~ 100 ml 41 ea

200 ~ 300 ml 25 ea

500 ml 25 ea

1000 ml 16 ea

2000 ml 9 ea

3000 ml 9 ea

5000 ml 5 ea

PHF-P71	Dedicated Flask Holder Platform W700 x D650 mm
---------	--



Including 72 ea x 50 ~ 100 ml polycarbonate flasks holder

PHF-P72	Dedicated Flask Holder Platform W700 x D650 mm
---------	--



Including 42 ea x 200 ~ 300 ml polycarbonate flasks holder

PHF-P73 **Dedicated Flask Holder Platform** **W700 x D650 mm**



Including 25 ea x 500 ~ 1000 ml polycarbonate flasks holder

PHF-M70 **Non-Slip Rubber Mat** **W700 x D650 mm**



Art No. **Polycarbonate Flask Holder (Size Adjustable)**



PHF-P01	50 ~ 100 ml
PHF-P02	200 ~ 300 ml
PHF-P03	500 ~ 1000 ml

Art No.	Stainless Steel Flask Holder (Size Adjustable)
----------------	---

PHF-S01	100 ml
PHF-S02	250 ml
PHF-S03	500 ml
PHF-S04	1000 ml
PHF-S05	2000 ml
PHF-S06	3000 ml
PHF-S07	5000 ml



Art No.	Test Tube Holder
----------------	-------------------------

PHF-T01	8 mm Dia. for 80 test tubes
PHF-T02	10 mm Dia. for 80 test tubes
PHF-T03	12 mm Dia. for 54 test tubes
PHF-T04	14 mm Dia. for 54 test tubes
PHF-T05	16 mm Dia. for 30 test tubes
PHF-T06	25 mm Dia. for 15 test tubes
PHF-T07	35 mm Dia. for 8 test tubes





Stainless Steel Chamber Interchangeable Platform

Tabletop Shaking Incubator

JSSI-070 Series Tabletop Shaking Incubator is compact to fit laboratory table and ideal for any shaking application requiring controlled temperature and shaking speed for microbiology, cell biology, cell culture, tissue culture, biochemistry, molecular biology, environmental engineering, soil testing field temperature range from + 10°C to +70°C.

Specifications

Heating	Forced Air Convection
Cooling	CFC Free air cooled hermetically sealed compressor
Temp. Range	JSSI-070T : ambient + 5°C ~ 70°C

JSSI-070C : + 10°C ~ 70°C

Accuracy	± 0.2°C at 25.0 °C (JSSI-070C)
Uniformity	± 1.0°C at 25.0 °C (JSSI-070C)
Shaking Motion	Orbital
Speed Range	20 ~ 350 rpm (orbital)
Control	Integrated Microprocessor PID Control Auto STOP Stop Timer
Sensor	Class A Pt-100 Ω Sensor
Safety	Over-Temperature Cut-Off Over Current Cut-Off
Material	Body - Epoxy Powder Coated Steel Chamber – Stainless Steel 304 Tempered Safety Glass Folding Door
Electric	220±10% VAC 50/60Hz 1-Phase
Plug config.	CEE 7/7 Schuko or BS 1363

Models

Art No.		JSSI-070T	JSSI-070C
Chamber Volume (Capacity)		62 L	
Dimensions	Inner	505 x 400 x 310	
W x D x H mm	Outer	550 x 600 x 660	550 x 700 x 660
	Platform	W410 x D380 mm	
Temperature Range		ambient + 5°C to 70°C	+ 10°C to 70°C
Accuracy		± 0.2°C at 37°C	± 0.2°C at 25 °C
Uniformity		± 1.0°C at 37°C	± 1.0°C at 25°C
Shaking	Motion	Orbital	
	Speed	20 ~ 350 rpm	
	Stroke	20 mm	
Working Light		25 Watt Bulb	
Heater Capacity		300 Watt	500 Watt
Refrigeration System		none	CFC-Free Air Cooled Compressor

Power Rating	3.2 Amp	4.5 Amp
Power Plug	CEE 7/7 Schuko European Standard or BS 1363 British Plug	

Features

Controller

JSC-7S Integrated Digital PID Controller

- Temperature control with $\pm 0.1^{\circ}\text{C}$
- Shaking speed control within ± 1 rpm
- Automatic STOP timer Max. 99min 59sec / 99hr 59min / 99day 23hr
- Dual digital LED displays TEMP, RPM and remaining TIME
- Temperature calibration
- Shaking speed calibration
- Slow Start and Stop Control
- Auto-tuning function
- Class A Pt-100 Ω sensor

Construction

- Durable epoxy powder coated metallic casing
- Corrosion resistant Stainless Steel 304 chamber
- Durable Stainless Steel 304 Sheath Heater and Copper-Aluminum fin evaporator
- Unique design folding tempered safety glass door

Performance

- Forced circulation for excellent thermal uniformity within $\pm 0.2^{\circ}\text{C}$
- Separate heating and cooling compartment prevents contamination and maintenance free
- Cooling system with hermetically sealed compressor
- Durable shaking mechanism with powerful AC motor supports orbital or reciprocal shaking motion

Convenience

- Unique design folding glass door for easy loading and unloading sample in limited space, lighting in chamber for easy observation during cultivation
- Door switch to cut-off shaking motion when put in and out sample
- Auto-defrost system, user settable interval and time
- Height adjustable level feet for balancing, anti-vibration
- Various choice of shaking platforms

Safety

DUAL OVER TEMP. CUT-OFF

- Digital system cut-off heater and AUDIO VISUAL ALARM in case $+2^{\circ}\text{C}$ above set temperature
- Analog system cut-off heater 10% above set temp.

MAX TEMP CUT-OFF heater and **AUDIO VISUAL ALARM** when +1°C above maximum limit

OVER COOLING. CUT-OFF

Digital system automatically cut-off compressor in case -3°C below set temperature

SENSOR DISCONNECTION ALARM

Motor failure ALARM

Shaking motion automatically stops when door opened

OVER CURRENT CUT-OFF : Electric Leakage Breaker

Ordering Information

Art No.	Descriptions	Elec. Req.	Capacity	Net Wt.	Ship Wt.
JSSI-070T	Tabletop Shaking Incubator ambient + 5°C to 70°C Heating only	220 VAC 50/60 Hz	85 L	-	-
JSSI-070C	Tabletop Shaking Incubator + 10°C to 70°C /w Cooling	220 VAC 50/60 Hz	85 L	-	-

(Shaking Incubator supplied without shaking platform and accessories)

Optional Accessories

Art No.	PHF-U40	Universal Spring Rack W410 x D380 mm
---------	---------	--------------------------------------



Flask loading capacity (approx.)

100 ml 15 ea

250 ml 8 ea

500 ml 4 ea

1000 ml 2 ea

2000 ml 1 ea

PHF-P40	Universal Flask Holder Platform W410 x D380 mm
---------	--



supplied without flask holders

Flask loading capacity (approx)

50 ~ 100 ml 23 ea

200 ~ 300 ml 16 ea

500 ml 9 ea

1000 ml 6 ea

2000 ml 4 ea

PHF-M40 Non-Slip Rubber Mat

W410 x D380 mm



Art No. Polycarbonate Flask Holder (Size Adjustable)

PHF-P01 50 ~ 100 ml

PHF-P02 200 ~ 300 ml

PHF-P03 500 ~ 1000 ml



Art No. Stainless Steel Flask Holder (Size Adjustable)

PHF-S01 100 ml

PHF-S02 250 ml

PHF-S03 500 ml

PHF-S04 1000 ml

PHF-S05 2000 ml

PHF-S06 3000 ml

PHF-S07 5000 ml



Art No. Test Tube Holder



PHF-T01 8 mm Dia. for 80 test tubes

PHF-T02 10 mm Dia. for 80 test tubes

PHF-T03 12 mm Dia. for 54 test tubes

PHF-T04 14 mm Dia. for 54 test tubes

PHF-T05 16 mm Dia. for 30 test tubes

PHF-T06 25 mm Dia. for 15 test tubes

PHF-T07 35 mm Dia. for 8 test tubes



Flask Holder Platform
/w polycarbonate holder



Flask Holder Platform
/w stainless steel holder



Universal Spring Wire Rack



Test Tube Holder

Interchangeable
Shaking Platforms

Stackable Shaking Incubator

JSSI-200 Series Shaking Incubator is designed to save laboratory space by stacking one onto the other unit which shares less footprint. Front loading door system allow easy sample loading and unloading. Static shelf space above shaking platform can be used as general incubator for petri-dishes.

Specifications

Heating	Forced Air Convection
Cooling	CFC Free air cooled hermetically sealed compressor
Temp. Range	JSSI-200T : ambient + 5°C ~ 70°C JSSI-200C(L) : + 10°C ~ 70°C
Accuracy	± 0.2°C at 25.0°C (JSSI-200C)

Uniformity	± 1.0°C at 25.0°C (JSSI-200C)
Shaking Motion	Orbital or Reciprocal
Speed Range	20 ~ 350 rpm (orbital)
Control	Integrated Microprocessor PID Control
	Auto STOP Timer
	Photoperiodic Light Control (JSSI-200CL)
Sensor	Class A Pt-100 Ω Sensor
Safety	Over-Temperature Cut-Off
	Over Current Cut-Off
Material	Body - Epoxy Powder Coated Steel
	Chamber – Stainless Steel 304
	Tempered Safety Glass Window
	Stacking bracket and height adjustable level feet for balancing and anti-vibration
	PVC Coated Static Wire Shelf
Electric	220±10% VAC 50/60Hz 1-Phase
Plug config.	CEE 7/7 Schuko or BS 1363

Models

Art No.		JSSI-200T	JSSI-200C	JSSI-200CL
Chamber Volume		198 L		
Dimensions	Inner	560 x 600 x 590		
W x D x H mm	Outer	930 x 740 x 955		
	Platform	W500 x D465 mm		
Temperature Range		ambient + 5°C to 70°C	+ 10°C to 70°C	
Accuracy		± 0.2°C at 37°C	± 0.2°C at 25°C	
Uniformity		± 1.0°C at 37°C	± 1.0°C at 25°C	
Shaking	Motion	Orbital or Reciprocal		
	Speed	20 ~ 350 rpm		
	Stroke	20 mm		
Illumination		none		2 ea x 36 Watt FPL
Light Control		none		24 hr Timer
Working Light		36 Watt FPL		none
Heater Capacity		500 Watt	700 Watt	700 Watt

Refrigeration System	none	CFC-Free Air Cooled Compressor	
Power Rating	3.2 Amp	5.7 Amp	6.3 Amp
Power Plug	CEE 7/7 Schuko European Standard or BS 1363 British Plug		

Features

Space Saving Desing



Chamber



Easy Maintenance



Chamber Light



Photoperiodic Control Timer



Controller

JSC-7S Integrated Digital PID Controller

Temperature control with $\pm 0.1^{\circ}\text{C}$

Shaking speed control within ± 1 rpm

Automatic STOP timer Max. 99min 59sec / 99hr 59min / 99day 23hr

Dual digital LED displays TEMP, RPM and remaining TIME

Temperature calibration

Shaking speed calibration

Slow Start and Stop Control

Auto-tuning function

Class A Pt-100 Ω sensor

JSSI-200CL Illumination Control

Programmable Photoperiodic Day and Night simulation Light Control with 2 x 36 Watt Fluorescent Lamps and 24 hr timer

Construction

Durable epoxy powder coated metallic casing
Corrosion resistant Stainless Steel 304 chamber
Durable Stainless Steel 304 Sheath Heater and Copper-Aluminum fin evaporator
Front loading door with magnetic packing with glass window

Performance

Forced circulation for excellent thermal uniformity within $\pm 0.2^{\circ}\text{C}$
Separate heating and cooling compartment prevents contamination and maintenance free
Cooling system with hermetically sealed compressor
Durable shaking mechanism with powerful AC motor supports orbital or reciprocal shaking motion
Programmable Lighting System with 24 hour timer for photosynthetic culture (JSSI-200CL)

Convenience

Front loading system for easy loading and unloading culture flasks and available to install optional static shelf above platform for general incubation at the same time
Double layer glass window, lighting in chamber for easy observation during cultivation
Door switch to cut-off shaking motion when put in and out sample
Auto-defrost system, user settable interval and time
Height adjustable level feet for balancing, anti-vibration
Optional staking bracket kit to stacking one onto the other unit to save space and operation efficiency
Various choice of shaking platforms

Safety

DUAL OVER TEMP. CUT-OFF

Digital system cut-off heater and AUDIO VISUAL ALARM in case $+2^{\circ}\text{C}$ above set temperature
Analog system cut-off heater 10% above set temp.

MAX TEMP CUT-OFF heater and AUDIO VISUAL ALARM when $+1^{\circ}\text{C}$ above maximum limit

OVER COOLING. CUT-OFF

Digital system automatically cut-off compressor in case -3°C below set temperature

SENSOR DISCONNECTION ALARM

Motor failure ALARM

Shaking motion automatically stops when door opened

OVER CURRENT CUT-OFF : Electric Leakage Breaker

Ordering Information

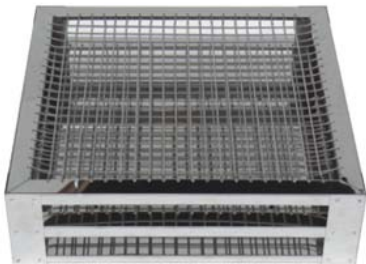
Art No.	Descriptions	Elec. Req.	Capacity	Net Wt.	Ship Wt.
JSSI-200T	Stackable Shaking Incubator ambient + 5°C to 70°C Heating only	220 VAC 50/60 Hz	198 L	104 kg	109 kg
JSSI-200C	Stackable Shaking Incubator + 10°C to 70°C	220 VAC 50/60 Hz	198 L	119 kg	124 kg

	/w Cooling				
JSSI-200CL	Stackable Shaking Incubator				
	+ 10°C to 70°C	220 VAC			
	/w Cooling	50/60 Hz	198 L	119 kg	124 kg
	/w Photoperiodic Light Control				

(Shaking Incubator supplied without shaking platform and accessories)

Optional Accessories

Art No.	Descriptions
PHF-P11	Adaptor Kit for Reciprocal Motion
PHF-P12	Stacking Bracket Kit
PHS-C08	PVC Coated Static Wire Shelf W530 x D580 mm
PHF-U50	Universal Spring Rack W490 x D470 mm



Flask loading capacity (approx.)

100 ml	20 ea
250 ml	13 ea
500 ml	10 ea
1000 ml	6 ea
2000 ml	5 ea

PHF-P50	Universal Flask Holder Platform W500 x D465 mm
----------------	---

supplied without flask holders

Flask loading capacity (approx)



50 ~ 100 ml	32 ea
200 ~ 300 ml	20 ea
500 ml	9 ea
1000 ml	9 ea
2000 ml	5 ea
3000 ml	4 ea
5000 ml	2 ea

PHF-P51	Dedicated Flask Holder Platform W500 x D465 mm
----------------	---



Including 36 ea x 50 ~ 100 ml polycarbonate flasks holder

PHF-P52 **Dedicated Flask Holder Platform** **W500 x D465 mm**



Including 20 ea x 200 ~ 300 ml polycarbonate flasks holder

PHF-P53 **Dedicated Flask Holder Platform** **W500 x D465 mm**



Including 12 ea x 500 ~ 1000 ml polycarbonate flasks holder

PHF-M50 **Non-Slip Rubber Mat** **W500 x D465 mm**



Art No. Polycarbonate Flask Holder (Size Adjustable)



PHF-P01 50 ~ 100 ml

PHF-P02 200 ~ 300 ml

PHF-P03 500 ~ 1000 ml

Art No. Stainless Steel Flask Holder (Size Adjustable)



PHF-S01 100 ml

PHF-S02 250 ml

PHF-S03 500 ml

PHF-S04 1000 ml

PHF-S05 2000 ml

PHF-S06 3000 ml

PHF-S07 5000 ml

Art No. Test Tube Holder



PHF-T01 8 mm Dia. for 80 test tubes

PHF-T02 10 mm Dia. for 80 test tubes

PHF-T03 12 mm Dia. for 54 test tubes

PHF-T04 14 mm Dia. for 54 test tubes

PHF-T05 16 mm Dia. for 30 test tubes

PHF-T06 25 mm Dia. for 15 test tubes

PHF-T07 35 mm Dia. for 8 test tubes



Independent Temperature, Shaking
and Illumination Control





Flask Holder Platform
/w polycarbonate holder



Flask Holder Platform
/w stainless steel holder



Universal Spring Wire Rack



Test Tube Holder

Interchangeable Shaking Platforms

Multi-Chamber Shaking Incubator

JSSI-202 Series Shaking Incubator has two independent temperature controlled chambers with shaker for big volume tissue culture applications at different temperature and shaking speed.

Specifications

Configuration	2-Chamber 2-Shaker independent temperature and speed control
Heating	Forced Air Convection
Cooling	CFC Free air cooled hermetically sealed compressor
Temp. Range	+ 10°C ~ 70°C
Accuracy	± 0.5°C at 25.0°C

Uniformity	± 2.0°C at 25.0°C
Shaking Motion	Orbital or Reciprocal
Speed Range	20 ~ 350 rpm (orbital)
Control	Integrated Microprocessor PID Control Auto STOP Timer
Sensor	Class A Pt-100 Ω Sensor
Safety	Over-Temperature Cut-Off Over Current Cut-Off
Material	Body - Epoxy Powder Coated Steel Chamber – Stainless Steel 304 Tempered Safety Glass Window Built-in Caster and height adjustable level feet for easy transport, balancing and anti-vibration
Electric	220±10% VAC 50/60Hz 1-Phase
Plug config.	CEE 7/7 Schuko or BS 1363

Models

Art No.	JSSI-202C	JSSI-202CL
Chamber Volume	2 Chamber x 324 L	
No. of Shaking Platform	2 shaking platforms	
Dimensions	Inner	750 x 720 x 600
W x D x H mm	Outer	1295 x 845 x 1750
	Platform	W700 x D650 mm
Temperature Range	+ 10°C to 70°C	
Accuracy	± 0.5°C at 25°C (without light)	
Uniformity	± 2.0°C at 25°C (without light)	
Shaking	Motion	Orbital or Reciprocal
	Speed	20 ~ 350 rpm
	Stroke	20 mm
Illumination	none	4 x 36 Watt FPL / Chamber
Photoperiodic Light Control	none	Option
Working Light	36 Watt FPL	none
Heater Capacity	2 x 1.2 kW	
Refrigeration System	CFC-Free Air Cooled Compressor	

Power Rating 20.0 Amp

Power Plug CEE 7/7 Schuko European Standard or BS 1363 British Plug

Features

Two Chambers Two Doors



Chamber /w Spring Rack



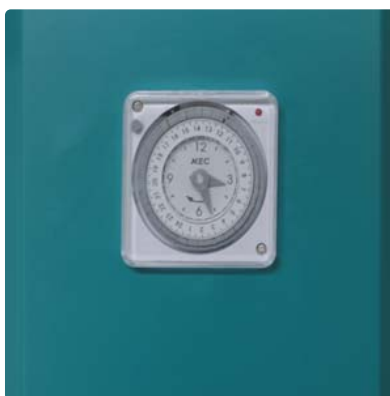
Independent Chamber Control



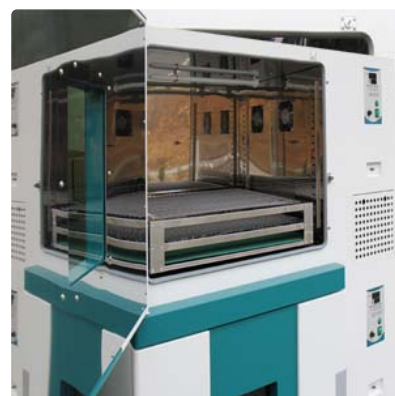
Lighting of JSSI-202CL



Photoperiodic Control Timer



Uniform Temperature



Controller

JSC-7S Integrated Digital PID Controller

Temperature control with $\pm 0.1^{\circ}\text{C}$

Shaking speed control within ± 1 rpm

Automatic STOP timer Max. 99min 59sec / 99hr 59min / 99day 23hr

Dual digital LED displays TEMP, RPM and remaining TIME

Temperature calibration

Shaking speed calibration

Slow Start and Stop Control

Auto-tuning function

Class A Pt-100 Ω sensor

JSSI-202CL Illumination Control

Programmable Photoperiodic Day and Night simulation Light Control with 4 x 36 Watt Fluorescent Lamps and 24 hr timer [OPTION]

Construction

Durable epoxy powder coated metallic casing
 Corrosion resistant Stainless Steel 304 chamber
 Durable Stainless Steel 304 Sheath Heater and Copper-Aluminum fin evaporator

Performance

Two independent temperature controlled chamber with shaking platform allows conducting two different culture conditions at the same time.

Forced circulation for excellent thermal uniformity within $\pm 0.5^{\circ}\text{C}$

Separate heating and cooling compartment prevents contamination and maintenance free

Cooling system with hermetically sealed compressor

Durable shaking mechanism with powerful AC motor supports orbital or reciprocal shaking motion

Programmable Lighting System with 24 hour timer for photosynthetic culture

Convenience

Door with silicone packing and compression door lock Glass window on each platform, lighting in chamber for easy observation during cultivation

Door switch to cut-off shaking motion when put in and out sample

Auto-defrost system, user settable interval and time

Caster and height adjustable level feet for easy transport, balancing and anti-vibration

Various choice of shaking platforms

Adjustable automatic defrost system

Safety

DUAL OVER TEMP. CUT-OFF

Digital system cut-off heater and AUDIO VISUAL ALARM in case $+2^{\circ}\text{C}$ above set temperature

Analog system cut-off heater 10% above set temp.

MAX TEMP CUT-OFF heater and AUDIO VISUAL ALARM when $+1^{\circ}\text{C}$ above maximum limit

OVER COOLING. CUT-OFF

Digital system automatically cut-off compressor in case -3°C below set temperature

SENSOR DISCONNECTION ALARM

Motor failure ALARM

Shaking motion automatically stops when door opened

OVER CURRENT CUT-OFF : Electric Leakage Breaker

Ordering Information

Art No.	Descriptions	Elec. Req.	Capacity	Net Wt.	Ship Wt.
JSSI-202C	Multi-Chamber Shaking Incubator 2-Chamber 2-Shaking Platforms	220 VAC 50/60 Hz	2 x 324 L	160 kg	250 kg
JSSI-202CL	Multi-Chamber Shaking Incubator 2-Chamber 2-Shaking Platforms /w Illumination Control	220 VAC 50/60 Hz	2 x 324 L	160 kg	250 kg

(Shaking Incubator supplied without shaking platform and accessories)

Optional Accessories

Art No.	Descriptions
OHC-106	24 Hour Timer Photoperiodic Light Control

Art No.	Descriptions
PHF-P11	Adaptor Kit for Reciprocal Motion
PHF-U70	Universal Spring Rack W690 x D650 mm



Flask loading capacity (approx.)

100 ml 42 ea

250 ml 25 ea

500 ml 19 ea

1000 ml 15 ea

2000 ml 8 ea

PHF-P70	Universal Flask Holder Platform W700 x D650 mm
---------	--

supplied without flask holders



Flask loading capacity (approx)

50 ~ 100 ml 41 ea

200 ~ 300 ml 25 ea

500 ml 25 ea

1000 ml 16 ea

2000 ml 9 ea

3000 ml 9 ea

5000 ml 5 ea

PHF-P71	Dedicated Flask Holder Platform W700 x D650 mm
---------	--



Including 72 ea x 50 ~ 100 ml polycarbonate flasks holder

PHF-P72	Dedicated Flask Holder Platform W700 x D650 mm
---------	--



Including 42 ea x 200 ~ 300 ml polycarbonate flasks holder

PHF-P73 Dedicated Flask Holder Platform W700 x D650 mm



Including 25 ea x 500 ~ 1000 ml polycarbonate flasks holder

PHF-M70 Non-Slip Rubber Mat W700 x D650 mm



Art No. Polycarbonate Flask Holder (Size Adjustable)



- PHF-P01** 50 ~ 100 ml
- PHF-P02** 200 ~ 300 ml
- PHF-P03** 500 ~ 1000 ml

Art No. Stainless Steel Flask Holder (Size Adjustable)

- PHF-S01** 100 ml
- PHF-S02** 250 ml
- PHF-S03** 500 ml
- PHF-S04** 1000 ml
- PHF-S05** 2000 ml
- PHF-S06** 3000 ml
- PHF-S07** 5000 ml



Art No. Test Tube Holder

- PHF-T01** 8 mm Dia. for 80 test tubes
- PHF-T02** 10 mm Dia. for 80 test tubes
- PHF-T03** 12 mm Dia. for 54 test tubes
- PHF-T04** 14 mm Dia. for 54 test tubes
- PHF-T05** 16 mm Dia. for 30 test tubes
- PHF-T06** 25 mm Dia. for 15 test tubes
- PHF-T07** 35 mm Dia. for 8 test tubes





Four Independent RPM Controlled Flask Holder Platform



Flask Holder Platform
/w polycarbonate holder



Flask Holder Platform
/w stainless steel holder



Universal Spring Wire Rack



Test Tube Holder

Interchangeable
Shaking Platforms

Four Stack Shaking Incubator

JSSI-4CM Series Four Stack Shaking Incubator provides multiple shaking platforms in a temperature controlled chamber for big volume tissue culture applications.

Specifications

Heating	Forced Air Convection
Cooling	CFC Free air cooled hermetically sealed compressor
Temp. Range	+ 10°C ~ 70°C
Accuracy	± 0.5°C at 25.0°C (JSSI-4CM)
Uniformity	± 3.0°C at 25.0°C (JSSI-4CM)

Shaking Motion	Orbital or Reciprocal
Speed Range	20 ~ 350 rpm (orbital)
Control	Microprocessor Digital PID Control
	Auto STOP Timer
	Individual shaking control of each stack
Sensor	Class A Pt-100 Ω Sensor
Safety	Over-Temperature Cut-Off
	Over Current Cut-Off
Material	Body - Epoxy Powder Coated Steel
	Chamber – Stainless Steel 304
	Tempered Safety Glass Window
	Built-in Caster and height adjustable level feet for easy transport, balancing and anti-vibration
Electric	220 \pm 10% VAC 50/60Hz 1-Phase
Plug config.	CEE 7/7 Schuko or BS 1363

Models

Art No.	JSSI-4CM	JSSI-4CML
Chamber Volume	1080 L	
No. of Shaking Platform	4 shaking platforms	
Dimensions	Inner	850 x 720 x 1925
W x D x H mm	Outer	1590 x 910 x 2255
	Platform	W700 x D650 mm
Temperature Range	+ 10°C to 70°C	
Accuracy	\pm 0.5°C at 25°C (without light)	
Uniformity	\pm 3.0°C at 25°C (without light)	
Shaking	Motion	Orbital or Reciprocal
	Speed	20 ~ 350 rpm
	Stroke	20 mm
Illumination	none	8 x 36 Watt FPL
Photoperiodic Light Control	none	Option
Working Light	25 Watt Bulb	none
Heater Capacity	2.0 kW	
Refrigeration System	CFC-Free Air Cooled Compressor	

Power Rating 15.0 Amp

Power Plug CEE 7/7 Schuko European Standard or BS 1363 British Plug

Features

Construction



Chamber /w Flask Platform



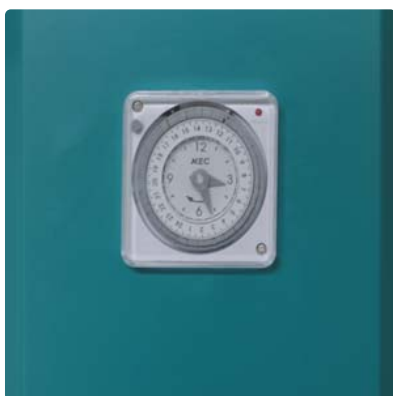
Chamber /w Spring Rack



Controller



Photoperiodic Control Timer



Caster with Level Foot



Controller

JSC-1D Digital PID Temperature Controller

±0.1°C Digital PID Controller with LED Display

Automatic START/STOP timer

Adjustable timer scale 99min 59sec / 99hr 59min / 99day 23hr or continuous operation

Temperature calibration

Auto-tuning function

Class A Pt-100 Ω sensor

JSC-TACHO Digital Shaking Controller

Digital feedback RPM controller with automatic STOP timer, max. 99min 59sec / 99hr 59min / continuous

4 digit dual digital LED displays RPM and TIME

Inbuilt rpm calibration function

Adjustable smooth start and stop motion

Construction

Durable epoxy powder coated metallic casing
 Corrosion resistant Stainless Steel 304 chamber
 Durable Stainless Steel 304 Sheath Heater and Copper-Aluminum fin evaporator
 Door with magnetic packing, double layer glass window
 4 ea x caster and level foot for self balancing and anti-vibration

Performance

Four independently controlled shaking platform in a temperature controlled chamber enables large volume of culture under same condition for time saving and consistent production result.

Each shaking platform can be operated independently under different speed and time

Forced circulation for excellent thermal uniformity within $\pm 0.5^{\circ}\text{C}$

Separate heating and cooling compartment prevents contamination and maintenance free

Cooling system with hermetically sealed compressor

Durable shaking mechanism with powerful AC motor supports orbital or reciprocal shaking motion

Programmable Lighting System with 24 hour timer for photosynthetic culture

Convenience

Door with silicone packing and compression door lock Glass window on each platform, lighting in chamber for easy observation during cultivation

Door switch to cut-off shaking motion when put in and out sample

Auto-defrost system, user settable interval and time

Caster and height adjustable level feet for easy transport, balancing and anti-vibration

Various choice of shaking platforms

Safety

DUAL OVER TEMP. CUT-OFF

Digital system cut-off heater and AUDIO VISUAL ALARM in case $+2^{\circ}\text{C}$ above set temperature

Analog system cut-off heater 10% above set temp.

MAX TEMP CUT-OFF heater and AUDIO VISUAL ALARM when $+1^{\circ}\text{C}$ above maximum limit

OVER COOLING. CUT-OFF

Digital system automatically cut-off compressor in case -3°C below set temperature

SENSOR DISCONNECTION ALARM

Motor failure ALARM

Shaking motion automatically stops when door opened

OVER CURRENT CUT-OFF : Electric Leakage Breaker

Ordering Information

Art No.	Descriptions	Elec. Req.	Capacity	Net Wt.	Ship Wt.
JSSI-4CM	Multi-Stack Shaking Incubator 4 Shaking Platforms	220 VAC 50/60 Hz	1080 L	410 kg	510 kg
JSSI-4CML	Multi-Stack Shaking Incubator 4 Shaking Platforms	220 VAC 50/60 Hz	1080 L	420 kg	520 kg

/w Illumination Control

(Shaking Incubator supplied without shaking platform and accessories)

Optional Accessories

Art No.	Descriptions
OHC-106	24 Hour Timer Photoperiodic Light Control

Art No.	Descriptions
PHF-P11	Adaptor Kit for Reciprocal Motion
PHF-U70	Universal Spring Rack W690 x D650 mm



Flask loading capacity (approx.)

100 ml	42 ea
250 ml	25 ea
500 ml	19 ea
1000 ml	15 ea
2000 ml	8 ea

PHF-P70	Universal Flask Holder Platform W700 x D650 mm
---------	--

supplied without flask holders



Flask loading capacity (approx)

50 ~ 100 ml	41 ea
200 ~ 300 ml	25 ea
500 ml	25 ea
1000 ml	16 ea
2000 ml	9 ea
3000 ml	9 ea
5000 ml	5 ea

PHF-P71	Dedicated Flask Holder Platform W700 x D650 mm
---------	--



Including 72 ea x 50 ~ 100 ml polycarbonate flasks holder

PHF-P72 Dedicated Flask Holder Platform W700 x D650 mm



Including 42 ea x 200 ~ 300 ml polycarbonate flasks holder

PHF-P73 Dedicated Flask Holder Platform W700 x D650 mm



Including 25 ea x 500 ~ 1000 ml polycarbonate flasks holder

PHF-M70 Non-Slip Rubber Mat W700 x D650 mm



Art No. Polycarbonate Flask Holder (Size Adjustable)



- PHF-P01** 50 ~ 100 ml
- PHF-P02** 200 ~ 300 ml
- PHF-P03** 500 ~ 1000 ml

Art No. Stainless Steel Flask Holder (Size Adjustable)

- PHF-S01** 100 ml
- PHF-S02** 250 ml
- PHF-S03** 500 ml
- PHF-S04** 1000 ml
- PHF-S05** 2000 ml
- PHF-S06** 3000 ml
- PHF-S07** 5000 ml



Art No. Test Tube Holder

- PHF-T01** 8 mm Dia. for 80 test tubes
- PHF-T02** 10 mm Dia. for 80 test tubes
- PHF-T03** 12 mm Dia. for 54 test tubes
- PHF-T04** 14 mm Dia. for 54 test tubes
- PHF-T05** 16 mm Dia. for 30 test tubes
- PHF-T06** 25 mm Dia. for 15 test tubes
- PHF-T07** 35 mm Dia. for 8 test tubes



Shaking Incubator





Flask Holder Platform
/w polycarbonate holder



Flask Holder Platform
/w stainless steel holder



Universal Spring Wire Rack



Test Tube Holder

Interchangeable
Shaking Platforms

Floor Standing Shaking Incubator

JSSI-300 Series Shaking Incubator is ideal for any shaking application requiring controlled temperature and speed for microbiology, cell biology, cell culture, tissue culture, biochemistry, molecular biology, environmental engineering, soil testing field temperature range from + 10°C to +70°C and shaking speed from 20 ~ 350 rpm.

Specifications

Heating	Forced Air Convection
Cooling	CFC Free air cooled hermetically sealed compressor
Temp. Range	JSSI-300T : ambient + 5°C ~ 70°C JSSI-300C(L) : + 10°C ~ 70°C
Accuracy	± 0.2°C at 25.0°C (JSSI-300C)



Uniformity	± 1.0°C at 25.0°C (JSSI-300C)
Shaking Motion	Orbital or Reciprocal
Speed Range	20 ~ 350 rpm (orbital)
Control	Integrated Microprocessor PID Control Auto STOP Timer Photoperiodic Light Control (JSSI-300CL)
Sensor	Class A Pt-100 Ω Sensor
Safety	Over-Temperature Cut-Off Over Current Cut-Off
Material	Body - Epoxy Powder Coated Steel Chamber – Stainless Steel 304 Tempered Safety Glass Window Built-in Caster and height adjustable level feet for easy transport, balancing and anti-vibration
Electric	220±10% VAC 50/60Hz 1-Phase
Plug config.	CEE 7/7 Schuko or BS 1363

Models

Art No.		JSSI-300T	JSSI-300C	JSSI-300CL
Chamber Volume		204 L		
Dimensions	Inner	760 x 715 x 375		
W x D x H mm	Outer	1080 x 875 x 975		
	Platform	W700 x D650 mm		
Temperature Range		amb. + 5°C to 70°C	+ 10°C to 70°C	
Accuracy		± 0.2°C at 37°C	± 0.2°C at 25°C (without light)	
Uniformity		± 1.0°C at 37°C	± 1.0°C at 25°C (without light)	
Shaking	Motion	Orbital or Reciprocal		
	Speed	20 ~ 350 rpm		
	Stroke	20 mm		
Illumination		none		4 ea x 20 Watt FL
Light Control		none		24 hr Timer
Working Light		25 Watt Bulb		
Heater Capacity		700 Watt	1.5 kW	1.5 kW
Refrigeration System		none	CFC-Free Air Cooled Compressor	

Power Rating	3.2 Amp	10.0 Amp	10.5 Amp
Power Plug	CEE 7/7 Schuko European Standard or BS 1363 British Plug		

Features

<p>Self-Balanced Lifting Door</p> 	<p>Chamber</p> 	<p>Easy Maintenance</p> 
<p>Chamber Light</p> 	<p>Photoperiodic Control Timer</p> 	

Controller

JSC-7S Integrated Digital PID Controller

- Temperature control with $\pm 0.1^{\circ}\text{C}$
- Shaking speed control within ± 1 rpm
- Automatic STOP timer Max. 99min 59sec / 99hr 59min / 99day 23hr
- Dual digital LED displays TEMP, RPM and remaining TIME
- Temperature calibration
- Shaking speed calibration
- Slow Start and Stop Control
- Auto-tuning function
- Class A Pt-100 Ω sensor

JSSI-300CL Illumination Control

Programmable Photoperiodic Day and Night simulation Light Control with 4 x 20 Watt Fluorescent Lamps and 24 hr timer

Construction

Durable epoxy powder coated metallic casing

Corrosion resistant Stainless Steel 304 chamber
Durable Stainless Steel 304 Sheath Heater and Copper-Aluminum fin evaporator
Self-balanced door with magnetic packing, glass window and lighting

Performance

Forced circulation for excellent thermal uniformity within $\pm 0.2^{\circ}\text{C}$
Separate heating and cooling compartment prevents contamination and maintenance free
Cooling system with hermetically sealed compressor
Durable shaking mechanism with powerful AC motor supports orbital or reciprocal shaking motion
Programmable Lighting System with 24 hour timer for photosynthetic culture (JSSI-300CL)

Convenience

Easy-to-open self-balanced door with air tight self adhesive magnetic packing and double layer glass window, lighting in chamber for easy observation during cultivation
Door switch to cut-off shaking motion when put in and out sample
Auto-defrost system, user settable interval and time
Caster and height adjustable level feet for easy transport, balancing and anti-vibration
Various choice of shaking platforms
Adjustable automatic defrost system

Safety

DUAL OVER TEMP. CUT-OFF

Digital system cut-off heater and AUDIO VISUAL ALARM in case $+2^{\circ}\text{C}$ above set temperature
Analog system cut-off heater 10% above set temp.

MAX TEMP CUT-OFF heater and AUDIO VISUAL ALARM when $+1^{\circ}\text{C}$ above maximum limit

OVER COOLING. CUT-OFF

Digital system automatically cut-off compressor in case -3°C below set temperature

SENSOR DISCONNECTION ALARM

Motor failure ALARM

Shaking motion automatically stops when door opened

OVER CURRENT CUT-OFF : Electric Leakage Breaker

Ordering Information

Art No.	Descriptions	Elec. Req.	Capacity	Net Wt.	Ship Wt.
JSSI-300T	Floor Standing Shaking Incubator ambient $+ 5^{\circ}\text{C}$ to 70°C Heating only	220 VAC 50/60 Hz	204 L	120 kg	170 kg
JSSI-300C	Floor Standing Shaking Incubator $+ 10^{\circ}\text{C}$ to 70°C /w Cooling	220 VAC 50/60 Hz	204 L	150 kg	200 kg
JSSI-300CL	Floor Standing Shaking Incubator $+ 10^{\circ}\text{C}$ to 70°C	220 VAC 50/60 Hz	204 L	160 kg	210 kg

/w Cooling

/w Photoperiodic Light Control

(Shaking Incubator supplied without shaking platform and accessories)

Optional Accessories

Art No.	Descriptions
---------	--------------

PHF-P11	Adaptor Kit for Reciprocal Motion
---------	-----------------------------------

PHF-U70	Universal Spring Rack W690 x D650 mm
---------	--------------------------------------



Flask loading capacity (approx.)

100 ml 42 ea

250 ml 25 ea

500 ml 19 ea

1000 ml 15 ea

2000 ml 8 ea

PHF-P70	Universal Flask Holder Platform W700 x D650 mm
---------	--

supplied without flask holders

Flask loading capacity (approx)

50 ~ 100 ml 41 ea

200 ~ 300 ml 25 ea

500 ml 25 ea

1000 ml 16 ea

2000 ml 9 ea

3000 ml 9 ea

5000 ml 5 ea



PHF-P71	Dedicated Flask Holder Platform W700 x D650 mm
---------	--



Including 72 ea x 50 ~ 100 ml polycarbonate flasks holder

PHF-P72	Dedicated Flask Holder Platform W700 x D650 mm
---------	--



Including 42 ea x 200 ~ 300 ml polycarbonate flasks holder

PHF-P73 Dedicated Flask Holder Platform W700 x D650 mm



Including 25 ea x 500 ~ 1000 ml polycarbonate flasks holder

PHF-M70 Non-Slip Rubber Mat W700 x D650 mm



Art No. Polycarbonate Flask Holder (Size Adjustable)



- PHF-P01** 50 ~ 100 ml
- PHF-P02** 200 ~ 300 ml
- PHF-P03** 500 ~ 1000 ml

Art No. Stainless Steel Flask Holder (Size Adjustable)

- PHF-S01** 100 ml
- PHF-S02** 250 ml
- PHF-S03** 500 ml
- PHF-S04** 1000 ml
- PHF-S05** 2000 ml
- PHF-S06** 3000 ml
- PHF-S07** 5000 ml



Art No. Test Tube Holder

- PHF-T01** 8 mm Dia. for 80 test tubes
- PHF-T02** 10 mm Dia. for 80 test tubes
- PHF-T03** 12 mm Dia. for 54 test tubes
- PHF-T04** 14 mm Dia. for 54 test tubes
- PHF-T05** 16 mm Dia. for 30 test tubes
- PHF-T06** 25 mm Dia. for 15 test tubes
- PHF-T07** 35 mm Dia. for 8 test tubes







Flask Holder Platform
/w polycarbonate holder



Flask Holder Platform
/w stainless steel holder



Universal Spring Wire Rack



Test Tube Holder

Interchangeable Shaking Platforms

Compact Tabletop Shaking Incubator

JSSI-350T Tabletop Shaking Incubator is compact to fit laboratory table and ideal for any shaking application requiring controlled temperature and shaking speed for microbiology, cell biology, cell culture, tissue culture, biochemistry, molecular biology, environmental engineering, soil testing field temperature range from ambient +5 oC to +50 oC and 10 to 300 rpm.

Common Specifications

Heating

Forced Air Convection

Temp. Range	ambient + 5 °C ~ 50 °C
Accuracy	± 0.2 °C at 37.0 °C
Uniformity	± 1.0 °C at 37.0 °C
Shaking Motion	Orbital
Speed Range	10 ~ 300 rpm (orbital)
Control	Digital Fuzzy Control with Capacitive Touch Button and Jog Dial
Timer	99hr 59min by 1 min resolution
Display	Full Size Digital Back Light LCD Display
Program Function	3 Preset Shaking Programs, 10 Steps for each program
Sensor	Class A Pt-100 Ω Sensor
Safety	Over-Temperature Cut-Off
	Over Load Protection
	Over Current Cut-Off
Material	Body – ABS Plastic, Epoxy Powder Coated Steel
	Tempered Safety Glass Folding Door
Electric	220±10% VAC 50/60Hz 1-Phase
Plug config.	CEE 7/7 Schuko or BS 1363

Features

Performance

- Temperature Range ambient +5 °C to 50 °C
- Temp. accuracy within +/- 0.2 °C
- Speed range 10 to 300 rpm
- 20 mm orbital stroke
- Digital Timer set up to 99hr 59min by 1 min
- W350 x D350 mm standard shaking platform
- Powerful driving mechanism with “Slow Start Function”
- Silent BLDC motor provides long shelf life and maintenance free
- Maximum loading capacity up to 10 kgs

Controller

- Advanced MCU processor applies precise speed control technology
- 3 Preset Shaking Programs
- 10 shaking steps per each program

- Touch-sensitive Multi-Functional Capacitive Button compatible to all kind of latex gloves as well as finger touch.
- Easy-to-use Jog Dial for quick and convenient setting temperature, speed and timer.
- Push to Run and Stop control.
- High-fidelity clear back light LCD displays complete setting and operating condition at a glance. Easy to monitoring set values, present speed and time.

Construction

- Hinged door with transparent acrylic window
- Silent BLDC motor
- Rugged and low profile ABS plastic body

Convenience

- Interchangeable shaking platform
- Max. loading capacity of universal flask platform
16ea x 50/100ml, 9ea x 250/500ml, 5ea x 1L
- Anti-Slip Silicone Mat

Safety

- Over-Temperature Cut-Off
- Over load protection
- Over current protection

Model

Description	JSSI-350T
Performance Data	
Heating	Forced Air Convection
Temperature Range	ambient +5 °C ~ +50 °C
Temperature Accuracy	+/- 0.2 °C at +37 °C
Temperature Uniformity	+/- 1.0 °C at +37 °C
Type of Shaking	Orbital
Speed Range	10 to 300 rpm, 1 rpm resolution
Orbital Stroke	20 mm
Max Load	10 kgs

Controller

Type	Digital Fuzzy Control with Capacitive Touch Button and Jog Dial
Timer	99hr 59min by 1 min resolution
Display	Full Size Digital Back Light LCD Display
	Independent ON/OFF Switch
Program Function	3 Preset Shaking Programs, 10 Steps for each program

Dimensions

Inner Dimensions (W x D x H)	400 x 400 x 280 mm
Outer Dimensions (W x D x H)	400 x 600 x 370 mm
Platform Dimensions (W x D)	350 x 350 mm
Maximum Usable Height	230 mm

Motor

Type	Brushless DC Motor
Power	45 Watt
Rotating Direction	Clockwise

Safety Data

Safety Device	Over Load Protection
	Over Current Protection
	Door Cut-Off Switch

Material Data

Body	ABS
Platform	Aluminum / Steel

Electrical Data

Rated voltage	230 ± 10% VAC
Power frequency	50/60 Hz
Nominal power	350 Watt
Phase	1 Phase
Plug configuration	CEE 7/7 Schuko or BS 1363

Usable Condition

Temp. & Humidity 5°C - 40 °C, < 80% RH

Ordering Information

Art. No.	Descriptions	Voltage
JSSI-350T	Tabletop Shaking Incubator	230 VAC 1 ph 50/60 Hz

Optional Accessories

Art. No.	Descriptions
PHF-U350T	Universal Spring Rack W350 x D350 mm
PHF-P350T	Universal Flask Holder Platform W350 x D350 mm Max. 16ea x 50/100ml or 9ea x 250/500ml or 5ea x 1L Does not including Flask Holder
PHF-M350T	Silicone Mat W350 x D350 mm
PHF-P01	Polycarbonate Flask Holder 50 ~ 100 ml Size Adjustable
PHF-P02	Polycarbonate Flask Holder 200 ~ 300 ml Size Adjustable
PHF-P03	Polycarbonate Flask Holder 500 ~ 1000 ml Size Adjustable
PHF-S01	Stainless Steel Flask Holder 100 ml
PHF-S02	Stainless Steel Flask Holder 250 ml
PHF-S03	Stainless Steel Flask Holder 500 ml
PHF-S04	Stainless Steel Flask Holder 1000 ml
PHF-T01	Test Tube Rack, 8 mm Dia. for 80 test tubes
PHF-T02	Test Tube Rack, 10 mm Dia. for 80 test tubes
PHF-T03	Test Tube Rack, 12 mm Dia. for 52 test tubes

PHF-T04 Test Tube Rack, 14 mm Dia. for 52 test tubes

PHF-T05 Test Tube Rack, 16 mm Dia. for 30 test tubes

PHF-T06 Test Tube Rack, 25 mm Dia. for 15 test tubes

PHF-T07 Test Tube Rack, 35 mm Dia. for 8 test tubes

Shaking Incubator





Flask Holder Platform
/w polycarbonate holder



Flask Holder Platform
/w stainless steel holder



Universal Spring Wire Rack



Test Tube Holder

Interchangeable
Shaking Platforms

Compact Shaking Incubator

JSSI-100 Series Compact Shaking Incubator is ideal for any shaking application requiring controlled temperature and shaking speed for microbiology, cell biology, cell culture, tissue culture, biochemistry, molecular biology, environmental engineering, soil testing field temperature range from + 10°C to +70°C.

Specifications

Heating	Forced Air Convection
Cooling	CFC Free air cooled hermetically sealed compressor
Temp. Range	JSSI-100T : ambient + 5°C ~ 70°C JSSI-100C : + 10°C ~ 70°C
Accuracy	± 0.2°C at 25.0°C (JSSI-100C)

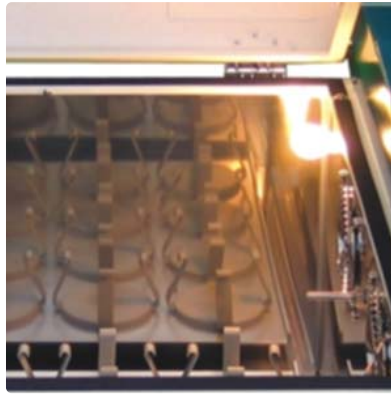
Uniformity	± 1.0°C at 25.0°C (JSSI-100C)
Shaking Motion	Orbital or Reciprocal
Speed Range	20 ~ 350 rpm (orbital)
Control	Integrated Microprocessor PID Control Auto STOP Stop Timer
Sensor	Class A Pt-100 Ω Sensor
Safety	Over-Temperature Cut-Off Over Current Cut-Off
Material	Body - Epoxy Powder Coated Steel Chamber – Stainless Steel 304 Tempered Safety Glass Window
Electric	220±10% VAC 50/60Hz 1-Phase
Plug config.	CEE 7/7 Schuko or BS 1363

Models

Art No.		JSSI-100T	JSSI-100C
Chamber Volume		110 L	
Dimensions	Inner	545 x 585 x 345	
W x D x H mm	Outer	770 x 715 x 790	
	Platform	W500 x D465 mm	
Temperature Range		ambient + 5°C to 70°C	+ 10°C to 70°C
Accuracy		± 0.2°C at 37°C	± 0.2°C at 25°C
Uniformity		± 1.0°C at 37°C	± 1.0°C at 25°C
Shaking	Motion	Orbital or Reciprocal	
	Speed	20 ~ 350 rpm	
	Stroke	20 mm	
Working Light		25 Watt Bulb	
Heater Capacity		400 Watt	700 Watt
Refrigeration System		none	CFC-Free Air Cooled Compressor
Power Rating		2.2 Amp	5.8 Amp
Power Plug		CEE 7/7 Schuko European Standard or BS 1363 British Plug	

Features

Construction	Chamber Lighting	Easy Maintenance
---------------------	-------------------------	-------------------------



Controller

JSC-7S Integrated Digital PID Controller

Temperature control with $\pm 0.1^{\circ}\text{C}$

Shaking speed control within ± 1 rpm

Automatic STOP timer Max. 99min 59sec / 99hr 59min / 99day 23hr

Dual digital LED displays TEMP, RPM and remaining TIME

Temperature calibration

Shaking speed calibration

Slow Start and Stop Control

Auto-tuning function

Class A Pt-100 Ω sensor

Construction

Durable epoxy powder coated metallic casing

Corrosion resistant Stainless Steel 304 chamber

Durable Stainless Steel 304 Sheath Heater and Copper-Aluminum fin evaporator

Self-balanced door with glass window

Performance

Forced circulation for excellent thermal uniformity within $\pm 0.2^{\circ}\text{C}$

Separate heating and cooling compartment prevents contamination and maintenance free

Cooling system with hermetically sealed compressor

Durable shaking mechanism with powerful AC motor supports orbital or reciprocal shaking motion

Convenience

Easy-to-open self-balanced door with air tight packing and glass window, lighting in chamber for easy observation during cultivation

Door switch to cut-off shaking motion when put in and out sample

Auto-defrost system, user settable interval and time

Height adjustable level feet for balancing, anti-vibration

Various choice of shaking platforms

Safety

DUAL OVER TEMP. CUT-OFF

Digital system cut-off heater and AUDIO VISUAL ALARM in case +2°C above set temperature

Analog system cut-off heater 10% above set temp.

MAX TEMP CUT-OFF heater and AUDIO VISUAL ALARM when +1°C above maximum limit

OVER COOLING. CUT-OFF

Digital system automatically cut-off compressor in case -3°C below set temperature

SENSOR DISCONNECTION ALARM

Motor failure ALARM

Shaking motion automatically stops when door opened

OVER CURRENT CUT-OFF : Electric Leakage Breaker

Ordering Information

Art No.	Descriptions	Elec. Req.	Capacity	Net Wt.	Ship Wt.
JSSI-100T	Compact Shaking Incubator ambient + 5°C to 70°C Heating only	220 VAC 50/60 Hz	110 L	70 kg	75 kg
JSSI-100C	Compact Shaking Incubator + 10°C to 70°C /w Cooling	220 VAC 50/60 Hz	110 L	80 kg	85 kg

(Shaking Incubator supplied without shaking platform and accessories)

Optional Accessories

	Art No.	Descriptions
no image	PHF-P11	Adaptor Kit for Reciprocal Motion
	PHF-U50	Universal Spring Rack W490 x D470 mm



Flask loading capacity (approx.)

100 ml 20 ea

250 ml 13 ea

500 ml 10 ea

1000 ml 6 ea

2000 ml 5 ea

PHF-P50 Universal Flask Holder Platform W500 x D465 mm



supplied without flask holders

Flask loading capacity (approx)

50 ~ 100 ml 32 ea

200 ~ 300 ml 20 ea

500 ml 9 ea

1000 ml 9 ea

2000 ml 5 ea

3000 ml 4 ea

5000 ml 2 ea

PHF-P51 Dedicated Flask Holder Platform W500 x D465 mm



Including 36 ea x 50 ~ 100 ml polycarbonate flasks holder

PHF-P52 Dedicated Flask Holder Platform W500 x D465 mm



Including 20 ea x 200 ~ 300 ml polycarbonate flasks holder

PHF-P53 Dedicated Flask Holder Platform W500 x D465 mm



Including 12 ea x 500 ~ 1000 ml polycarbonate flasks holder

PHF-M50 Non-Slip Rubber Mat W500 x D465 mm

Алматы (7273)495-231
Ангарск (3955)60-70-56
Архангельск (8182)63-90-72
Астрахань (8512)99-46-04
Барнаул (3852)73-04-60
Белгород (4722)40-23-64
Благовещенск (4162)22-76-07
Брянск (4832)59-03-52
Владивосток (423)249-28-31
Владикавказ (8672)28-90-48
Владимир (4922)49-43-18
Волгоград (844)278-03-48
Вологда (8172)26-41-59
Воронеж (473)204-51-73
Екатеринбург (343)384-55-89

Иваново (4932)77-34-06
Ижевск (3412)26-03-58
Иркутск (395)279-98-46
Казань (843)206-01-48
Калининград (4012)72-03-81
Калуга (4842)92-23-67
Кемерово (3842)65-04-62
Киров (8332)68-02-04
Коломна (4966)23-41-49
Кострома (4942)77-07-48
Краснодар (861)203-40-90
Красноярск (391)204-63-61
Курск (4712)77-13-04
Курган (3522)50-90-47
Липецк (4742)52-20-81

Магнитогорск (3519)55-03-13
Москва (495)268-04-70
Мурманск (8152)59-64-93
Набережные Челны (8552)20-53-41
Нижний Новгород (831)429-08-12
Новокузнецк (3843)20-46-81
Ноябрьск (3496)41-32-12
Новосибирск (383)227-86-73
Омск (3812)21-46-40
Орел (4862)44-53-42
Оренбург (3532)37-68-04
Пенза (8412)22-31-16
Петрозаводск (8142)55-98-37
Псков (8112)59-10-37

Пермь (342)205-81-47
Ростов-на-Дону (863)308-18-15
Рязань (4912)46-61-64
Самара (846)206-03-16
Саранск (8342)22-96-24
Санкт-Петербург (812)309-46-40
Саратов (845)249-38-78
Севастополь (8692)22-31-93
Симферополь (3652)67-13-56
Смоленск (4812)29-41-54
Сочи (862)225-72-31
Ставрополь (8652)20-65-13
Сургут (3462)77-98-35
Сыктывкар (8212)25-95-17
Тамбов (4752)50-40-97

Тверь (4822)63-31-35
Тольятти (8482)63-91-07
Томск (3822)98-41-53
Тула (4872)33-79-87
Тюмень (3452)66-21-18
Ульяновск (8422)24-23-59
Улан-Удэ (3012)59-97-51
Уфа (347)229-48-12
Хабаровск (4212)92-98-04
Чебоксары (8352)28-53-07
Челябинск (351)202-03-61
Череповец (8202)49-02-64
Чита (3022)38-34-83
Якутск (4112)23-90-97
Ярославль (4852)69-52-93

Россия +7(495)268-04-70

Казахстан +7(7172)727-132

Киргизия +996(312)96-26-47

www.jsr.nt-rt.ru | | jou@nt-rt.ru