

Алматы (7273)495-231  
Ангарск (3955)60-70-56  
Архангельск (8182)63-90-72  
Астрахань (8512)99-46-04  
Барнаул (3852)73-04-60  
Белгород (4722)40-23-64  
Благовещенск (4162)22-76-07  
Брянск (4832)59-03-52  
Владивосток (423)249-28-31  
Владикавказ (8672)28-90-48  
Владимир (4922)49-43-18  
Волгоград (844)278-03-48  
Вологда (8172)26-41-59  
Воронеж (473)204-51-73  
Екатеринбург (343)384-55-89

Иваново (4932)77-34-06  
Ижевск (3412)26-03-58  
Иркутск (395)279-98-46  
Казань (843)206-01-48  
Калининград (4012)72-03-81  
Калуга (4842)92-23-67  
Кемерово (3842)65-04-62  
Киров (8332)68-02-04  
Коломна (4966)23-41-49  
Кострома (4942)77-07-48  
Краснодар (861)203-40-90  
Красноярск (391)204-63-61  
Курск (4712)77-13-04  
Курган (3522)50-90-47  
Липецк (4742)52-20-81

Магнитогорск (3519)55-03-13  
Москва (495)268-04-70  
Мурманск (8152)59-64-93  
Набережные Челны (8552)20-53-41  
Нижний Новгород (831)429-08-12  
Новокузнецк (3843)20-46-81  
Ноябрьск (3496)41-32-12  
Новосибирск (383)227-86-73  
Омск (3812)21-46-40  
Орел (4862)44-53-42  
Оренбург (3532)37-68-04  
Пенза (8412)22-31-16  
Петрозаводск (8142)55-98-37  
Псков (8112)59-10-37

Пермь (342)205-81-47  
Ростов-на-Дону (863)308-18-15  
Рязань (4912)46-61-64  
Самара (846)206-03-16  
Саранск (8342)22-96-24  
Санкт-Петербург (812)309-46-40  
Саратов (845)249-38-78  
Севастополь (8692)22-31-93  
Симферополь (3652)67-13-56  
Смоленск (4812)29-41-54  
Сочи (862)225-72-31  
Ставрополь (8652)20-65-13  
Сургут (3462)77-98-35  
Сыктывкар (8212)25-95-17  
Тамбов (4752)50-40-97

Тверь (4822)63-31-35  
Тольятти (8482)63-91-07  
Томск (3822)98-41-53  
Тула (4872)33-79-87  
Тюмень (3452)66-21-18  
Ульяновск (8422)24-23-59  
Улан-Удэ (3012)59-97-51  
Уфа (347)229-48-12  
Хабаровск (4212)92-98-04  
Чебоксары (8352)28-53-07  
Челябинск (351)202-03-61  
Череповец (8202)49-02-64  
Чита (3022)38-34-83  
Якутск (4112)23-90-97  
Ярославль (4852)69-52-93

Россия +7(495)268-04-70

Казахстан +7(7172)727-132

Киргизия +996(312)96-26-47

[www.jsr.nt-rt.ru](http://www.jsr.nt-rt.ru) | [jou@nt-rt.ru](mailto:jou@nt-rt.ru)

**Технические характеристики на  
общие инкубаторы  
программируемые, двухкамерные,  
компактные JSGI  
КОМПАНИИ JSR**

# Laboratroy

## INCUBATOR

## SELECTION GUIDE

### JSGI-Series Generat Heated Incubator

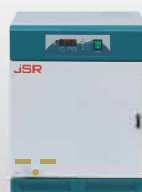


- amb. +5 °C - 70 °C
- Constant Temperature
- Timer On / Off
- RS-232C or 485 10PPrdNI
- Program Controller
- 5 PTN 80 SEG [OPTION]



MODEL	CAPACITY	TEMPERATURE	ACCURACY
JSGI-050T	48 L	amb. +5 °C - 70 °C	± 0.2 °C
JSGI-100T	96 L		± 0.2 °C
JSGI-150T	150 L		± 0.2 °C
JSGI-250T	250 L		± 0.3 °C
JSGI-250DT	2 x 250 L		± 0.3 °C

### JSGI-Series Compact Incubator



- amb. +5 °C - 50 °C
- Constant Temperature
- Timer On / Off



MODEL	CAPACITY	TEMPERATURE	ACCURACY
JSGI-10T	<b>9.3L</b>	amb. +5 °C	± 0.2 °C
JSGI-30T	31.5 L	- 50 °C	± 0.2 °C

### JSBI-C Series Cooled BOD Incubator



- +0 °C - 70 °C
- Constant Temperature
- Timer On / Off
- RS-232C or 485 10PPrdNI



MODEL	CAPACITY	TEMPERATURE	ACCURACY
JSBI-050C	50 L	+ 0 °C - 70 °C	± 0.2 °C
JSBI-100C	100 L		
JSBI-150C	150 L		
JSBI-250C	250 L		
JSBI-420C	420 L		
JSBI-840C	840 L		

### JSBI-CP Series Programmable Cooled Incubator



- +0 °C - 70 °C
- Program Controller
- 5 PTN 80 SEG
- RS-232C or 485 10PPrdNI



MODEL	CAPACITY	TEMPERATURE	ACCURACY
JSBI-150CP	150 L	+ 0 °C - 70 °C	± 0.2 °C
JSBI-250CP	250 L		
JSBI-420CP	420 L		

## JSBI-DCP Series Dual Chamber Cooled Incubator



- Dual Chamber
- +0 °C - 70 °C
- Constant Temperature or Program Controller  
5 PTN 80 SEG
- Timer On / Off
- RS-Z3ZC or 485 [OPTION]



MODEL	CAPACITY	TEMPERATURE	ACCURACY
JSBI-250DC	2 x 250 L	+0°C - 70 °C	± 0.2 °C
JSBI-250DCP			

## JSMI-02 Series 2 Chamber Incubator

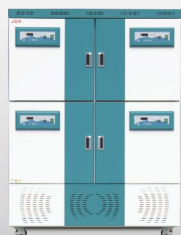


- Dual Chamber
- +0 °C - 70 °C
- Constant Temperature or Program Controller  
5 PTN 80 SEG
- Timer On / Off
- Photoperiodic Light Control
- RS-Z3ZC or 485 [OPTION]



MODEL	CAPACITY	TEMPERATURE	FEATURE
JSMI-02C	Z x 125 L	+0°C - 70 °C	Constant
JSMI-02CP			Program
JSMI-02CPL			Light

## JSMI-04 Series Multi-Room Incubator



- Four Chamber
- +0 °C - 70 °C
- Constant Temperature or Program Controller  
5 PTN 80 SEG
- Timer On / Off
- Photoperiodic Light Control
- RS-Z3ZC or 485 [OPTION]



MODEL	CAPACITY	TEMPERATURE	FEATURE
JSMI-04T	4 x 125 L	amb. + 5°C-70°C	Heated
JSMI-04C		Cooled	
JSMI-04CP		0°C - 70 °C	Program
JSMI-04CPL		Light	
JSMI-05C(L)	5 x 44 L	+5 °C - 70 °C	Cooled
JSMI-0BCP(L)	8 x 26 L	+5 °C - 70 °C	Cooled

## JSSC-Series Cold Lab Storage Chamber



- 4 °C Refrigerator
- On/Off Control
- RS-Z3ZC or 485 [OPTION]



MODEL	CAPACITY	TEMPERATURE	ACCURACY
JSSC-700C	686 L	+0°C - 10°C	± 2.0°C
JSSC-1200C	1176 L		

# Laboratroy

## INCUBATOR

# HEATED REFRIGERATED Standards & Options

## Controller Guide

	JSC-0D Basic Controller	JSC-1D Digital PID Controller	JSC-3D Programmable Controller	JSC-5D Programmable Controller
Type	Digital PID	Digital PID	16-bit Microprocessor	
Display	LED		2-Line Back light LCD	
Operation	Constant Temperature		Constant Temp. Mode Program Mode	
Accuracy	± 0.1 'C		± 0.1 'C	
Timer	Auto START/STOP		Auto STOP	
TimerScale	Max. 99min 59sec / 99hr 59min / 99 day 23hr selectable		Max. 99min 59sec / 99hr 59min selectable	
Pattern Memory	n/a	n/a	1 Pattern	5 Patterns
Max. Segment			11 Segments	80 Segments
Max. Repeats			999 or unlimited	999 or unlimited
			Segment Skip	Segment Skip Pattern Link
Light Control			On/Off control integrated with programming	
RS-232C or RS-485	n/a	Yes [OPTION]	Yes [OPTION]	Yes [OPTION]
PC Software	n/a	Yes [OPTION]	Yes [OPTION]	n/a
Calibration	Yes	Yes	Yes	Yes
Auto-tuning	Yes	Yes	Yes	Yes

JSC-0D



JSC-1 D



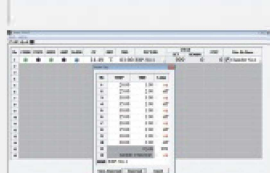
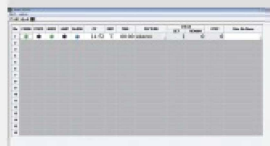
JSC-3D



JSC-5D



## PC Software [OPTION]



- RS-232C Serial Port Communication
- Turn On and Off control
- Temperature and Timer Setting
- Pattern Programming and uploading
- Current temperature Graph Rendering
- Temperature Data Logging
- Alarm Signal
- RS-232C (AI 1 5!.\$
- \$- . 11 11 Q
- 5:1,1, EF0D-J 1,1 71'5'
- J/J'c! .!! .!J. 71'5'
- \$- % 5: .:i2HE ±EAI 71'5'
- 5: GiOI Ei <? W li 71'5'
- WEJ' ±EAI

### ASCII Data Collection

Date	Time	Temp	Step	Seg	Cycle
2014-01-08	09:00:00	37.00	00:05	08	001/999
2014-01-08	09:00:10	37.01	00:05	08	001/999
2014-01-08	09:00:20	37.01	00:05	08	001/999
2014-01-08	09:00:30	37.00	00:05	08	001/999



# Compact INCUBATOR

## ECONOMIC for HACCP LAB. Gravity Convection

### Compact Incubator

JSGI-Series Compact Economic Incubator is suitable for personal, small food laboratory or HACCP Industry doing daily incubation of bacterial screening with Petri-Dish or Petri-Film.

#### Specifications

<b>Heating</b>	Gravity Convection (JSGI-1 OT) Forced Convection (JSGI-30T)
<b>Temp. Range</b>	ambient + 5 °C - 50 °C
<b>Accuracy</b>	± 0.2 °C at 37.0°C (JSGI-10T)
<b>Uniformity</b>	± 0.5 °C at 37.0°C (JSGI-10T)
<b>Control</b>	Microprocessor PID Control Auto START / STOP Timer
<b>Sensor</b>	Class A Pt-100 Q Sensor
<b>Safety</b>	Over-Temperature Cut-Off Over Current Cut-Off
<b>Material</b>	Body : Epoxy Powder Coated Steel Chamber: Stainless Steel 304 Inner Glass Door (JSGI-30T on/y) Including PVC Coated Wire Shelf
<b>Electric</b>	220 ± 10% VAC 50/60Hz 1-Phase

Plug config.



or



CEE 717 Schuko

BS 1363

#### Control Accuracy

- ± 0.1 °C Digital PID Controller with automatic START / STOP timer max. 99min 59sec / 99hr 59min / 99 day 23hr
- Temperature calibration, auto-tuning function
- Class A Pt-100 Q sensor
- ▶ 정밀한 PID 컨트롤러는 온도를 ±0.1 °C 단위로 제어
- ▶ 예약 / 정지 타이머 내장 99분59초 / 99시간59분 / 99일23시간
- ▶ 온도보정, 오토튜닝 기능 내장
- Class A Pt-100 Q 5: {!!!A}



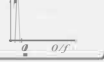
Heated amb. + 5 °C - 50 °C



Constant Temperature Controller



Timer On/ Off



## Performance

- Durable epoxy powder coated metallic casing
- Corrosion resistant Stainless Steel 304 chamber
- JSGI-1 OT: Mild gravity convection with durable silicone film heater
- JSGI-30T: Forced Convection with blower maintain better thermal uniformity
- Simple and durable design permits practical usage of bacteria screening such as HACCP laboratory

- LH 01 IOj ٧٤ QULLAI nil nil
- LH-f6J0I I(j)\:- Stainless Steel 304 JHC1
- JSGI-10T: -UQ.1 1 \$L Ej - QI l:lf nil 2.I-f.-f.Ej 7f 5f-E Jf<rJCHff,gl-6J
- JSGI-30T: -f.E. j -iJ-711?6.11,17-jl -i1 7f f19\$foj LH 01 Ef-IOjU ir-5:'. OIU OfOI HACCP tl-I Q1 qI W .:3. \$-QII UJgt

## Convenience

- Outer door with self adhesive magnetic packing
- Inner glass door with high density silicone packing and air-tight door lock (*JSGI-30T only*)
- Stainless Steel 304 Chamber with seamless round cornered edge allows easy cleaning and prevents contamination
- Two tier removable PVC coated wire shelf

- 71 01 laj\:- ٤ ,gl-0.12.1-f. Qj u-71
- LH-f. 1 Qj 2f .:i 1 u-71, Qj 71 01 IOj (JSGI-030T)
- QI 3:!.L:~E O%AH \itOI f E. ni I laj Qj AilOI flUQ\$f.:;:i .o gl-rI
- 29 PVC 3I 'E

## Safety

- DUAL OYER TEMP. CUT-OFF
- MAX TEMP CUT-OFF
- AUDIBLE YISUALALARMS
- SENSOR DISCONNECTION ALARM
- OYER CURRENT CUT-OFF FUSE

## Accessories

Art No.	Descriptions
	<b>PVC Coated Wire Shelf</b>
PHS-C01	for JSGI-10T W205xD200mm
PHS-C02	for JSGI-30T W295 x D290 mm

## Ordering Information

	JSGI-10T	JSGI-30T
Heating	Gravity Convection	Forced Convection
Chamber Volume (Capacity)	9.3L	31.5 L
Dimensions Inner	210x210x210	300 x 300 x 350
W x D x H mm Outer	315x370x435	425 x 460 x 590
Inner Glass Door	no	yes
Temperature Range	ambient+5 °C to 50 °C	
Accuracy at 37.0°C	± 0.2 °C	± 0.2 °C
Uniformity at 37.0°C	± 0.5 °C	± 0.5 °C
Number of shelves	2	2
Heater Capacity	60W	100W
Power Rating	0.3Amp	0.5Amp
Power Plug	CEE 717 Schuko	

# **JSGI-250DT**

## **PROGRAMMABLE DUAL CHAMBER GENERAL INCUBATOR**

amb. +5 °C ~ 70 °C

JSGI-250DT Dual Chamber Incubator provides two 250 liter capacity chambers having individual temperature controller enable incubation of different temperature at the same time. Controller provides 10 Steps of temperature programming as well as constant temperature operation for more versatile use, temperature range from Ambient +5 °C to +70°C. It gives excellent performance for incubation of microorganisms such as bacteria, cell and tissue. Also suitable for various QA / QC Tests.

## **# Features**

### **Performance**

Temperature Range : amb. +5 °C to 70 °C

Temperature Accuracy : within +/- 0.3 °C

Temperature Uniformity : within +/- 1.5 °C

Forced air convection for excellent thermal accuracy and uniformity.

Aero-dynamic chamber designed with circulation blower to achieve superior thermal uniformity.

Separated heating compartment located on the back wall for contamination free and maintenance free.

### **Construction**

Durable epoxy powder coated metallic casing.

Corrosion resistant Stainless Steel 304 chamber with seamless round cornered edge allows easy cleaning and prevents leakage.

Tempered Safety Inner Glass Door for easy observation of samples.

Cable Access Port

### **Convenience**

Outer door with self-adhesive magnetic packing.

Inner Glass Door with high density silicone gasket and air-tight Door Lock.

Removable and adjustable shelf by 25mm spacing.

Opening size adjustable Cable Access Port.

Door switch cut-off heater and blower to reduce temperature drop when put in and out samples.

### **Safety**

DOOR SENSOR WITH DOOR OPEN AUDIO VISUAL ALARM

DUAL OVER TEMPERATURE CUT-OFF BY CONTROLLER

AND INDEPENDENT THERMOSTAT

HIGH TEMPERATURE CUT-OFF AND AUDIO VISUAL ALARM

LOW TEMPERATURE CUT-OFF AND AUDIO VISUAL ALARM

PT SENSOR SHORT OR DISCONNECTION AUDIO VISUAL ALARM

OVER CURRENT CUT-OFF



JSGI-250DT Dual Chamber General Incubator



Featured Controller

# JIC-CON 5<sup>th</sup> GEN

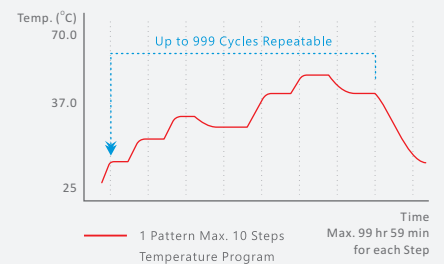
- 3-Zone PID Algorithm**
- 3-Point Calibration**
- 1-Point Offset**
- 10-Step 999-Cycle Program**

## Controller Highlights

- ▶ 16-bit Digital Microprocessor PID Controller.
- ▶ High-fidelity clear back light LCD displays complete settings and operating conditions with high readability.
- ▶ UV Coated Water-Proof Polycarbonate Touch Panel.
- ▶ Easy-to-use Encoder Type Jog Dial for quick and convenient temperature and time setting.
- ▶ 0.1 °C control resolution.
- ▶ Turn-On and Turn-Off Timer up to 99 hour 59 min.
- ▶ Temperature and Timer memory function.
- ▶ 10 Step, 999 Cycle Program.
- ▶ Temperature and Timer automatically resume after power restoration.
- ▶ Class A Pt-100 Ohm Sensor.
- ▶ RS-232C PC Communication Interface. [OPTION]

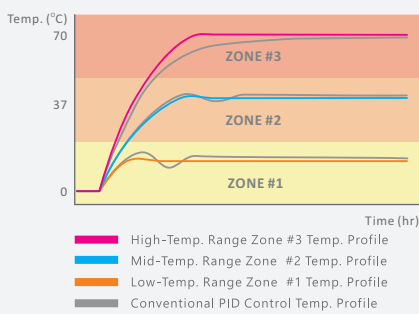


### 10 Step Program



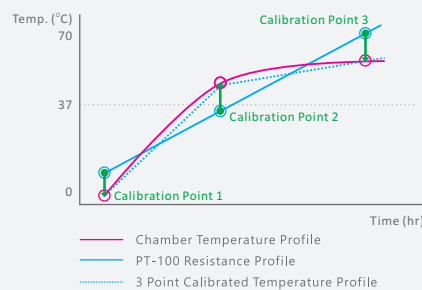
User can create 10 Steps of varying temperature program and save it in memory for repeated use. Program can be repeated up to Max. 999 Cycles.

### 3-Zone PID Algorithm



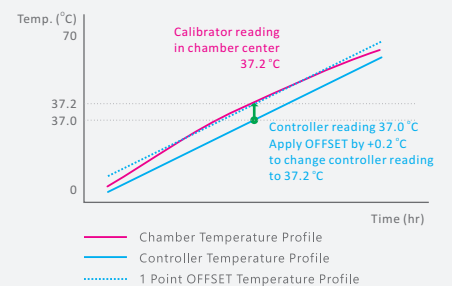
Complete temperature range is divided into three zones (LOW/MIDDLE/HIGH) and each ZONE has its individual PID algorithm to provide precise and superior temperature control characteristic of whole temperature range.

### 3-Point Calibration



An excellent calibration tool to calibrate chamber with THREE DIFFERENT TEMPERATURE POINTS to adjust multiple temperature bias to increase accuracy of WHOLE TEMPERATURE RANGE.

### 1-Point Offset



A simple and easy calibration tool that calibrates chamber's temperature at one specific frequently used temperature point.

# # Specifications

## Model

JSGI-250DT

## Dimension Data

Chamber Volume	2 x 250 Liters
Inner Dims. (WxDxH) mm	500 x 500 x 1000 / chamber
Outer Dims. (WxDxH) mm	1365 x 735 x 1400
Window Dims. (WxH) mm	561 x 1077
No. of Shelf Positions	36 ea / chamber
No. of Shelf Included	6 ea
No. of Cable Access Port	1 ea / chamber

## Performance Data

Heating System	Forced Convection
Temperature Range	ambient +5 °C to 70 °C, 0.1 °C resolution
Temperature Accuracy at 37.0 °C	+/- 0.3 °C
Temperature Uniformity at 37.0 °C	+/- 1.5 °C
Heat-up Time to 37.0 °C	20 min.

## Controller

Type	Digital Microprocessor PID Temp. Controller with Capacitive Touch Button and Jog Dial
Display	Full Size Digital Back Light Graphic LCD Display
Control Logic	3 Zone PID Control
Calibration	1 Point Temperature Offset 3 Point Temperature Calibration
Temp. Program	1 Pattern, 10 Steps, 1 ~ 999 ( Unlimited ) Times Repeatable
Auto-Stop Timer	Max. 99 hr 59 min by 1 min resolution
Suto-Start Timer	Max. 99 hr 59 min by 1 min resolution
Sensor	Class A Pt-100 Ohm Sensor
Power Restoration	Power and Timer Restoration Function in case of power outage
Communication Interface	RS-232C Communication Interface [OPTION]

## Material Data

Body	Epoxy Powder Coated Steel
Chamber	Stainlss Steel 304 (AISI304)
Inner Glass Door	5.0 mm Thick Tempered Safety Glass Door

## Safety Data

Safety Device	Door Open / Over Temperature / Over Current Protection Audio Visual Alarm
---------------	---

## Electrical Data

Power Requirement	220 +/- 10% VAC   50/60 Hz   1 Phase
Power Consumption	410 W 2.0 amp / chamber
Plug Configuration	CEE 7/7 Schuko or BS 1363

## Usable Condition

Temp. & Humidity	5 °C - 40 °C, 80% RH Max.
------------------	---------------------------

# JSGI-250DT

PROGRAMMABLE  
DUAL  
CHAMBER  
GENERAL  
INCUBATOR

amb. +5 °C ~ 70 °C

## # Ordering Information

### Art. Number

### Descriptions

JSGI-250DT

Dual Chamber Heated General Incubator

2 x 250 Liter Chambers

220 VAC 1 ph 50/60Hz

### Accessories

### Shelves

PHS-A06

Perforated Shelf, Stainless Steel 304, for JSJI-250T W470 x D480 mm

PHS-C05

Wire Shelf, PVC Coated, for JSJI-250T W470 x D480 mm

PHS-A99

Shelf Support, Set of 4 ea

# JSGI-Series

## PROGRAMMABLE GENERAL HEATED INCUBATOR

amb. +5 °C ~ 70 °C



JSGI-100T General Heated Incubator  
with OPTIONAL Cabinet Stand

JSGI-Series Programmable General Incubator provides 10 Steps of temperature programming as well as constant temperature operation for more versatile use, temperature range from Ambient +5 °C to +70 °C. It gives excellent performance for incubation of microorganisms such as bacteria, cell and tissue. Also suitable for various QA / QC Tests.

## # Features

### Performance

Temperature Range : amb. +5 °C to 70 °C

Temperature Accuracy : within +/- 0.2 °C

Temperature Uniformity : within +/- 0.5 °C

Forced air convection for excellent thermal accuracy and uniformity.

Aero-dynamic chamber designed with circulation blower to achieve superior thermal uniformity.

Separated heating compartment located on the back wall for contamination free and maintenance free.

### Construction

Durable epoxy powder coated metallic casing.

Corrosion resistant Stainless Steel 304 chamber with seamless round cornered edge allows easy cleaning and prevents leakage.

Tempered Safety Inner Glass Door for easy observation of samples.

Cable Access Port

### Convenience

Outer door with self-adhesive magnetic packing.

Inner Glass Door with high density silicone gasket and air-tight Door Lock.

Removable and adjustable shelf by 25mm spacing.

Opening size adjustable Cable Access Port.

Door switch cut-off heater and blower to reduce temperature drop when put in and out samples.

### Safety

DOOR SENSOR WITH DOOR OPEN AUDIO VISUAL ALARM

DUAL OVER TEMPERATURE CUT-OFF BY CONTROLLER  
AND INDEPENDENT THERMOSTAT

HIGH TEMPERATURE CUT-OFF AND AUDIO VISUAL ALARM

LOW TEMPERATURE CUT-OFF AND AUDIO VISUAL ALARM

PT SENSOR SHORT OR DISCONNECTION AUDIO VISUAL ALARM

OVER CURRENT CUT-OFF

Featured Controller

# JIC-CON 5<sup>th</sup> GEN

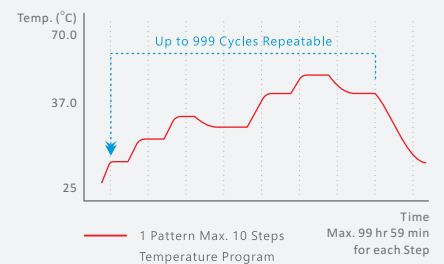
- 3-Zone PID Algorithm**
- 3-Point Calibration**
- 1-Point Offset**
- 10-Step 999-Cycle Program**

## Controller Highlights

- ▶ 16-bit Digital Microprocessor PID Controller.
- ▶ High-fidelity clear back light LCD displays complete settings and operating conditions with high readability.
- ▶ UV Coated Water-Proof Polycarbonate Touch Panel.
- ▶ Easy-to-use Encoder Type Jog Dial for quick and convenient temperature and time setting.
- ▶ 0.1 °C control resolution.
- ▶ Turn-On and Turn-Off Timer up to 99 hour 59 min.
- ▶ Temperature and Timer memory function.
- ▶ 10 Step, 999 Cycle Program.
- ▶ Temperature and Timer automatically resume after power restoration.
- ▶ Class A Pt-100 Ohm Sensor.
- ▶ RS-232C PC Communication Interface. [OPTION]

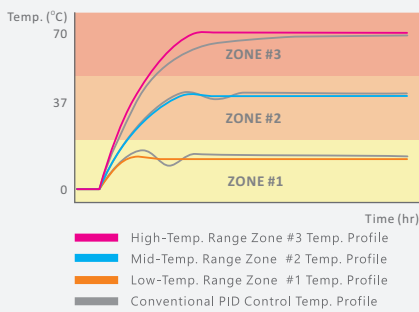


### 10 Step Program



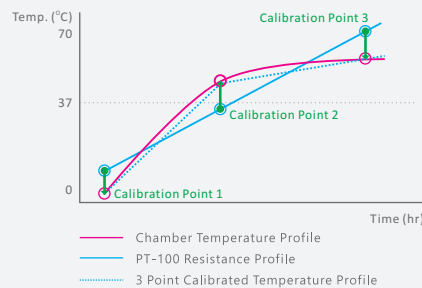
User can create 10 Steps of varying temperature program and save it in memory for repeated use. Program can be repeated up to Max. 999 Cycles.

### 3-Zone PID Algorithm



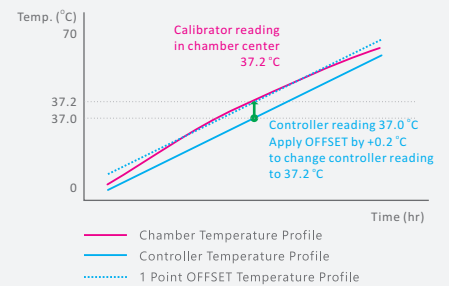
Complete temperature range is divided into three zones (LOW/MIDDLE/HIGH) and each ZONE has its individual PID algorithm to provide precise and superior temperature control characteristic of whole temperature range.

### 3-Point Calibration



An excellent calibration tool to calibrate chamber with THREE DIFFERENT TEMPERATURE POINTS to adjust multiple temperature bias to increase accuracy of WHOLE TEMPERATURE RANGE.

### 1-Point Offset



A simple and easy calibration tool that calibrates chamber's temperature at one specific frequently used temperature point.

# # Specifications

Model	JSGI-050T	JSGI-100T	JSGI-150T	JSGI-250T
<b>Dimension Data</b>				
Chamber Volume	48 Liters	96 Liters	150 Liters	250 Liters
Inner Dims. (WxDxH) mm	400 x 300 x 400	400 x 400 x 600	500 x 500 x 600	500 x 500 x 1000
Outer Dims. (WxDxH) mm	580 x 535 x 720	580 x 635 x 920	680 x 735 x 920	680 x 735 x 1320
Window Dims. (WxH) mm	461 x 477	461 x 677	561 x 677	561 x 1077
No. of Shelf Positions	12 ea	20 ea	20 ea	36 ea
No. of Shelf Included	2 ea	2 ea	2 ea	3 ea
No. of Cable Access Port	1 ea	1 ea	1 ea	1 ea
<b>Performance Data</b>				
Heating System	Forced Convection			
Temperature Range	ambient +5 °C to 70 °C, 0.1 °C resolution			
Temperature Accuracy at 37.0 °C	+/- 0.2 °C	+/- 0.2 °C	+/- 0.2 °C	+/- 0.3 °C
Temperature Uniformity at 37.0 °C	+/- 0.5 °C	+/- 0.5 °C	+/- 1.0 °C	+/- 1.5 °C
Heat-up Time to 37.0 °C	15 min.	15 min.	15 min.	20 min.
<b>Controller</b>				
Type	Digital Microprocessor PID Temp. Controller with Capacitive Touch Button and Jog Dial			
Display	Full Size Digital Back Light Graphic LCD Display			
Control Logic	3 Zone PID Control			
Calibration	1 Point Temperature Offset 3 Point Temperature Calibration			
Temp. Program	1 Pattern, 10 Steps, 1 ~ 999 ( Unlimited ) Times Repeatable			
Auto-Stop Timer	Max. 99 hr 59 min by 1 min resolution			
Suto-Start Timer	Max. 99 hr 59 min by 1 min resolution			
Sensor	Class A Pt-100 Ohm Sensor			
Power Restoration	Power and Timer Restoration Function in case of power outage			
Communication Interface	RS-232C Communication Interface [OPTION]			
<b>Material Data</b>				
Body	Epoxy Powder Coated Steel			
Chamber	Stainlss Steel 304 (AISI304)			
Inner Glass Door	5.0 mm Thick Tempered Safety Glass Door			
<b>Safety Data</b>				
Safety Device	Door Open / Over Temperature / Over Current Protection Audio Visual Alarm			
<b>Electrical Data</b>				
Power Requirement	220 +/- 10% VAC   50/60 Hz   1 Phase			
Power Consumption	160 W 0.7 amp	210 W 1.0 amp	260 W 1.2 amp	410 W 2.0 amp
Plug Configuration	CEE 7/7 Schuko or BS 1363			
<b>Usable Condition</b>				
Temp. & Humidity	5 °C - 40 °C, 80% RH Max.			

## # Ordering Information

## JSGI-Series

PROGRAMMABLE  
HEATED  
GENERAL  
INCUBATOR  
amb. +5 °C ~ 70 °C

### Art. Number

### Descriptions

JSGI-050T	Heated General Incubator	50 Liter	220 VAC 1 ph 50/60Hz
JSGI-100T	Heated General Incubator	100 Liter	220 VAC 1 ph 50/60Hz
JSGI-150T	Heated General Incubator	150 Liter	220 VAC 1 ph 50/60Hz
JSGI-250T	Heated General Incubator	250 Liter	220 VAC 1 ph 50/60Hz

### Accessories

### Shelves

PHS-A03	Perforated Shelf, Stainless Steel 304, for JSGI-050T	W370 x D280 mm
PHS-A04	Perforated Shelf, Stainless Steel 304, for JSGI-100T	W370 x D380 mm
PHS-A06	Perforated Shelf, Stainless Steel 304, for JSGI-150T	W470 x D480 mm
PHS-A06	Perforated Shelf, Stainless Steel 304, for JSGI-250T	W470 x D480 mm
PHS-C03	Wire Shelf, PVC Coated, for JSGI-050T	W370 x D280 mm
PHS-C04	Wire Shelf, PVC Coated, for JSGI-100T	W370 x D380 mm
PHS-C05	Wire Shelf, PVC Coated, for JSGI-150T	W470 x D480 mm
PHS-C05	Wire Shelf, PVC Coated, for JSGI-250T	W470 x D480 mm

PHS-A99 Shelf Support, Set of 4 ea

### Accessories

### Cabinet Stands

PCG-050	Cabinet Stand with Caster for JSGI-050T
PCG-100	Cabinet Stand with Caster for JSGI-100T
PCG-150	Cabinet Stand with Caster for JSGI-150T



### Accessories

### Base Trolley Kit (with Caster)

PHA-01G	Base Trolley Kit for JSGI-050T
PHA-03G	Base Trolley Kit for JSGI-100T
PHA-05G	Base Trolley Kit for JSGI-150T



### Accessories

### Stacking Kit

PHA-02G	Stacking Kit for JSGI-050T
PHA-04G	Stacking Kit for JSGI-100T
PHA-06G	Stacking Kit for JSGI-150T



Алматы (7273)495-231  
Ангарск (3955)60-70-56  
Архангельск (8182)63-90-72  
Астрахань (8512)99-46-04  
Барнаул (3852)73-04-60  
Белгород (4722)40-23-64  
Благовещенск (4162)22-76-07  
Брянск (4832)59-03-52  
Владивосток (423)249-28-31  
Владикавказ (8672)28-90-48  
Владимир (4922)49-43-18  
Волгоград (844)278-03-48  
Вологда (8172)26-41-59  
Воронеж (473)204-51-73  
Екатеринбург (343)384-55-89

Иваново (4932)77-34-06  
Ижевск (3412)26-03-58  
Иркутск (395)279-98-46  
Казань (843)206-01-48  
Калининград (4012)72-03-81  
Калуга (4842)92-23-67  
Кемерово (3842)65-04-62  
Киров (8332)68-02-04  
Коломна (4966)23-41-49  
Кострома (4942)77-07-48  
Краснодар (861)203-40-90  
Красноярск (391)204-63-61  
Курск (4712)77-13-04  
Курган (3522)50-90-47  
Липецк (4742)52-20-81

Магнитогорск (3519)55-03-13  
Москва (495)268-04-70  
Мурманск (8152)59-64-93  
Набережные Челны (8552)20-53-41  
Нижний Новгород (831)429-08-12  
Новокузнецк (3843)20-46-81  
Ноябрьск (3496)41-32-12  
Новосибирск (383)227-86-73  
Омск (3812)21-46-40  
Орел (4862)44-53-42  
Оренбург (3532)37-68-04  
Пенза (8412)22-31-16  
Петрозаводск (8142)55-98-37  
Псков (8112)59-10-37

Пермь (342)205-81-47  
Ростов-на-Дону (863)308-18-15  
Рязань (4912)46-61-64  
Самара (846)206-03-16  
Саранск (8342)22-96-24  
Санкт-Петербург (812)309-46-40  
Саратов (845)249-38-78  
Севастополь (8692)22-31-93  
Симферополь (3652)67-13-56  
Смоленск (4812)29-41-54  
Сочи (862)225-72-31  
Ставрополь (8652)20-65-13  
Сургут (3462)77-98-35  
Сыктывкар (8212)25-95-17  
Тамбов (4752)50-40-97

Тверь (4822)63-31-35  
Тольятти (8482)63-91-07  
Томск (3822)98-41-53  
Тула (4872)33-79-87  
Тюмень (3452)66-21-18  
Ульяновск (8422)24-23-59  
Улан-Удэ (3012)59-97-51  
Уфа (347)229-48-12  
Хабаровск (4212)92-98-04  
Чебоксары (8352)28-53-07  
Челябинск (351)202-03-61  
Череповец (8202)49-02-64  
Чита (3022)38-34-83  
Якутск (4112)23-90-97  
Ярославль (4852)69-52-93

Россия +7(495)268-04-70

Казахстан +7(7172)727-132

Киргизия +996(312)96-26-47

[www.jsr.nt-rt.ru](http://www.jsr.nt-rt.ru) | | [jou@nt-rt.ru](mailto:jou@nt-rt.ru)